

Product datasheet for **TA343586**

Nrf2 (NFE2L2) Rabbit Polyclonal Antibody

Product data:

Product Type:	Primary Antibodies
Applications:	WB
Recommended Dilution:	WB
Reactivity:	Human
Host:	Rabbit
Isotype:	IgG
Clonality:	Polyclonal
Immunogen:	The immunogen for anti-NFE2L2 antibody: synthetic peptide directed towards the C terminal of human NFE2L2. Synthetic peptide located within the following region: KEKGENDKSLHLLKKQLSTLYLEVFSMLRDEEDGKPYSPSEYSLQQTRDGN
Formulation:	Liquid. Purified antibody supplied in 1x PBS buffer with 0.09% (w/v) sodium azide and 2% sucrose. <i>Note that this product is shipped as lyophilized powder to China customers.</i>
Purification:	Protein A purified
Conjugation:	Unconjugated
Storage:	Store at -20°C as received.
Stability:	Stable for 12 months from date of receipt.
Predicted Protein Size:	68 kDa
Gene Name:	nuclear factor, erythroid 2 like 2
Database Link:	NP_006155 Entrez Gene 4780 Human Q16236



[View online »](#)

Background:

NFE2 (MIM 601490), NFE2L1 (MIM 163260), and NFE2L2 comprise a family of human genes encoding basic leucine zipper (bZIP) transcription factors. They share highly conserved regions that are distinct from other bZIP families, such as JUN (MIM 165160) and FOS (MIM 164810), although remaining regions have diverged considerably from each other. NFE2L2 may be involved in the transcriptional activation of genes of the beta-globin cluster by mediating enhancer activity of hypersensitive site 2 of the beta-globin locus control region. NFE2 (MIM 601490), NFE2L1 (MIM 163260), and NFE2L2 comprise a family of human genes encoding basic leucine zipper (bZIP) transcription factors. They share highly conserved regions that are distinct from other bZIP families, such as JUN (MIM 165160) and FOS (MIM 164810), although remaining regions have diverged considerably from each other (Chan et al., 1995). [supplied by OMIM]

Synonyms:

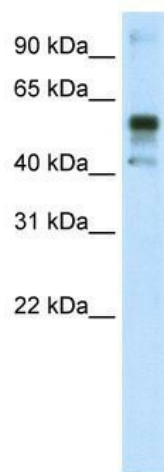
NRF2

Note:

Immunogen Sequence Homology: Dog: 100%; Pig: 100%; Rat: 100%; Human: 100%; Mouse: 100%; Guinea pig: 100%; Horse: 93%; Bovine: 93%; Rabbit: 93%

Protein Families:

Transcription Factors

Product images:

WB Suggested Anti-NFE2L2 Antibody Titration:
1.25 ug/ml; ELISA Titer: 1: 1562500; Positive
Control: A172 cell lysate NFE2L2 is supported by
BioGPS gene expression data to be expressed in
A172