

## Product datasheet for **TA343585**

### MTGR1 (CBFA2T2) Rabbit Polyclonal Antibody

#### Product data:

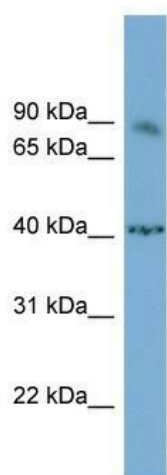
Product Type:	Primary Antibodies
Applications:	WB
Recommended Dilution:	WB, IHC
Reactivity:	Human
Host:	Rabbit
Isotype:	IgG
Clonality:	Polyclonal
Immunogen:	The immunogen for anti-NFATC1 antibody: synthetic peptide directed towards the middle region of human NFATC1. Synthetic peptide located within the following region: STLMPPAAPGVSPKLDLSPAAYTKGVASPGHCHLGLPQPAGEAPAVQDVP
Formulation:	Liquid. Purified antibody supplied in 1x PBS buffer with 0.09% (w/v) sodium azide and 2% sucrose. <i>Note that this product is shipped as lyophilized powder to China customers.</i>
Purification:	Affinity Purified
Conjugation:	Unconjugated
Storage:	Store at -20°C as received.
Stability:	Stable for 12 months from date of receipt.
Predicted Protein Size:	89 kDa
Gene Name:	CBFA2/RUNX1 translocation partner 2
Database Link:	<a href="#">NP_005084</a> <a href="#">Entrez Gene 9139 Human</a> <a href="#">O43439</a>
Background:	NFATC1 is a component of the nuclear factor of activated T cells DNA-binding transcription complex. This complex consists of at least two components: a preexisting cytosolic component that translocates to the nucleus upon T cell receptor (TCR) stimulation
Synonyms:	EHT; MTGR1; p85; ZMYND3
Note:	Immunogen Sequence Homology: Human: 100%



[View online »](#)

Protein Families: Transcription Factors

**Product images:**



WB Suggested Anti-NFATC1 Antibody Titration:  
0.2-1 ug/ml; ELISA Titer: 1: 1562500; Positive  
Control: NCI-H226 cell lysate