

Product datasheet for **TA343579**

KBTBD10 (KLHL41) Rabbit Polyclonal Antibody

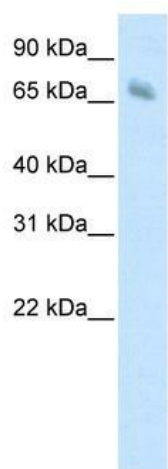
Product data:

Product Type:	Primary Antibodies
Applications:	WB
Recommended Dilution:	WB
Reactivity:	Human
Host:	Rabbit
Isotype:	IgG
Clonality:	Polyclonal
Immunogen:	The immunogen for anti-KBTBD10 antibody: synthetic peptide directed towards the C terminal of human KBTBD10. Synthetic peptide located within the following region: AGSLYAIGGFAMIQLESKEFAPTEVNDIWKYEDDKKEWAGMLKEIRYASG
Formulation:	Liquid. Purified antibody supplied in 1x PBS buffer with 0.09% (w/v) sodium azide and 2% sucrose.
Purification:	Protein A purified
Conjugation:	Unconjugated
Storage:	Store at -20°C as received.
Stability:	Stable for 12 months from date of receipt.
Predicted Protein Size:	68 kDa
Gene Name:	kelch like family member 41
Database Link:	NP_006054 Entrez Gene 10324 Human O60662
Background:	KBTBD10 contains 1 BTB (POZ) domain and is required for pseudopod elongation in transformed cells. KBTBD10 mRNA is up-regulated by less than two folds in the heart in human patients with HCM.
Synonyms:	KBTBD10; Krp1; SARCOSIN
Note:	Immunogen Sequence Homology: Dog: 100%; Pig: 100%; Rat: 100%; Horse: 100%; Human: 100%; Mouse: 100%; Bovine: 100%; Rabbit: 100%; Guinea pig: 100%



[View online »](#)

Product images:



WB Suggested Anti-KBTBD10 Antibody Titration:
1.25 ug/ml; ELISA Titer: 1: 1562500; Positive
Control: Human Muscle