

Product datasheet for **TA343576**

TSC22D1 Rabbit Polyclonal Antibody

Product data:

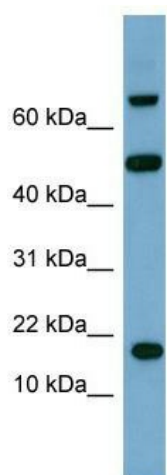
Product Type:	Primary Antibodies
Applications:	WB
Recommended Dilution:	WB
Reactivity:	Human
Host:	Rabbit
Isotype:	IgG
Clonality:	Polyclonal
Immunogen:	The immunogen for anti-TSC22D1 antibody: synthetic peptide directed towards the middle region of human TSC22D1. Synthetic peptide located within the following region: ASVRLDNSSSGASVVAIDNKIEQAMDLVKSHLMYAVREEVEVLKEQIKEL
Formulation:	Liquid. Purified antibody supplied in 1x PBS buffer with 0.09% (w/v) sodium azide and 2% sucrose. <i>Note that this product is shipped as lyophilized powder to China customers.</i>
Purification:	Affinity Purified
Conjugation:	Unconjugated
Storage:	Store at -20°C as received.
Stability:	Stable for 12 months from date of receipt.
Predicted Protein Size:	16 kDa
Gene Name:	TSC22 domain family member 1
Database Link:	NP_006013 Entrez Gene 8848 Human Q15714
Background:	TSC22D1 belongs to the TSC-22/Dip/Bun family. It is a transcriptional repressor. TSC22D1 acts on the C-type natriuretic peptide (CNP) promoter.
Synonyms:	Ptg-2; TGFB114; TSC22
Note:	Immunogen Sequence Homology: Dog: 100%; Pig: 100%; Rat: 100%; Horse: 100%; Human: 100%; Mouse: 100%; Bovine: 100%; Rabbit: 100%; Zebrafish: 100%; Guinea pig: 100%



[View online »](#)

Protein Families: Transcription Factors

Product images:



WB Suggested Anti-TSC22D1 Antibody Titration:
0.2-1 ug/ml; ELISA Titer: 1: 312500; Positive
Control: ACHN cell lysate