

Product datasheet for **TA343572**

SOX1 Rabbit Polyclonal Antibody

Product data:

Product Type:	Primary Antibodies
Applications:	WB
Recommended Dilution:	WB
Reactivity:	Human, Mouse
Host:	Rabbit
Isotype:	IgG
Clonality:	Polyclonal
Immunogen:	The immunogen for anti-SOX1 antibody: synthetic peptide directed towards the N terminal of human SOX1. Synthetic peptide located within the following region: GGGAKANQDRVKRP MNAFMVWSRGQRRKMAQENPKMHNSEISKRLGAEWK
Formulation:	Liquid. Purified antibody supplied in 1x PBS buffer with 0.09% (w/v) sodium azide and 2% sucrose. <i>Note that this product is shipped as lyophilized powder to China customers.</i>
Purification:	Affinity Purified
Conjugation:	Unconjugated
Storage:	Store at -20°C as received.
Stability:	Stable for 12 months from date of receipt.
Predicted Protein Size:	39 kDa
Gene Name:	SRY-box 1
Database Link:	NP_005977 Entrez Gene 20664 Mouse Entrez Gene 6656 Human O00570
Background:	SOX1 is a member of the SOX (SRY-related HMG-box) family of transcription factors involved in the regulation of embryonic development and in the determination of the cell fate. SOX1 may act as a transcriptional activator after forming a protein complex with other proteins. In mice, a similar protein regulates the gamma-crystallin genes and is essential for lens development.
Synonyms:	SRY (sex determining region Y)-box 1; SRY-related HMG-box gene 1

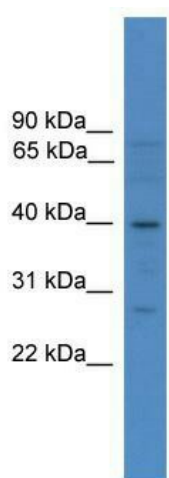


[View online »](#)

Note: Immunogen Sequence Homology: Pig: 100%; Rat: 100%; Horse: 100%; Human: 100%; Mouse: 100%; Bovine: 100%; Zebrafish: 100%; Guinea pig: 100%; Dog: 93%; Rabbit: 93%

Protein Families: Adult stem cells, ES Cell Differentiation/IPS, Induced pluripotent stem cells, Transmembrane

Product images:



WB Suggested Anti-SOX1 Antibody Titration: 0.2-1 ug/ml; ELISA Titer: 1: 1562500; Positive Control: 293T cell lysate