

Product datasheet for **TA343571**

SIX1 Rabbit Polyclonal Antibody

Product data:

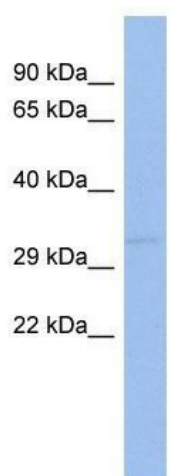
Product Type:	Primary Antibodies
Applications:	WB
Recommended Dilution:	WB
Reactivity:	Human
Host:	Rabbit
Isotype:	IgG
Clonality:	Polyclonal
Immunogen:	The immunogen for anti-SIX1 antibody: synthetic peptide directed towards the middle region of human SIX1. Synthetic peptide located within the following region: LQGNMGHARSSNYSLPGLTASQPSHGLQTHQHQLQDSSLGPLTSSLVDLG
Formulation:	Liquid. Purified antibody supplied in 1x PBS buffer with 0.09% (w/v) sodium azide and 2% sucrose. <i>Note that this product is shipped as lyophilized powder to China customers.</i>
Purification:	Affinity Purified
Conjugation:	Unconjugated
Storage:	Store at -20°C as received.
Stability:	Stable for 12 months from date of receipt.
Predicted Protein Size:	32 kDa
Gene Name:	SIX homeobox 1
Database Link:	NP_005973 Entrez Gene 6495 Human Q15475
Background:	SIX1 is a homeobox protein that is similar to the Drosophila 'sine oculis' gene product. This gene is found in a cluster of related genes on chromosome 14 and is thought to be involved in limb development. Defects in this gene are a cause of autosomal dom
Synonyms:	BOS3; DFNA23; TIP39
Note:	Immunogen Sequence Homology: Human: 100%; Dog: 93%; Pig: 93%; Rat: 93%; Mouse: 93%; Rabbit: 93%; Guinea pig: 93%; Horse: 86%



[View online »](#)

Protein Families: Transcription Factors

Product images:



WB Suggested Anti-SIX1 Antibody Titration: 0.2-1 ug/ml; ELISA Titer: 1: 62500; Positive Control: PANC1 cell lysate