

## Product datasheet for **TA343568**

### MEF2D Rabbit Polyclonal Antibody

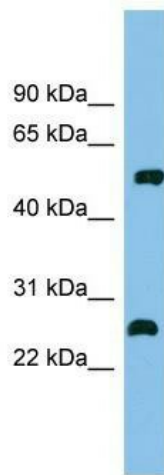
#### Product data:

|                         |  |
|-------------------------|--|
| Product Type:           | Primary Antibodies   |
| Applications:           | WB   |
| Recommended Dilution:   | WB   |
| Reactivity:             | Human  |
| Host:                   | Rabbit   |
| Isotype:                | IgG  |
| Clonality:              | Polyclonal   |
| Immunogen:              | The immunogen for anti-MEF2D antibody: synthetic peptide directed towards the middle region of human MEF2D. Synthetic peptide located within the following region:<br>GDGLSSPAGGSYETGDRDDGRGDFGPTLGLLRPAPEPEAEGSAVKRMRLD |
| Formulation:            | Liquid. Purified antibody supplied in 1x PBS buffer with 0.09% (w/v) sodium azide and 2% sucrose.<br><i>Note that this product is shipped as lyophilized powder to China customers.</i>                                  |
| Purification:           | Affinity Purified  |
| Conjugation:            | Unconjugated   |
| Storage:                | Store at -20°C as received.  |
| Stability:              | Stable for 12 months from date of receipt.   |
| Predicted Protein Size: | 56 kDa   |
| Gene Name:              | myocyte enhancer factor 2D   |
| Database Link:          | <a href="#">NP_005911</a><br><a href="#">Entrez Gene 4209 Human</a><br><a href="#">Q14814</a>  |



[View online »](#)

|                          |  |
|--------------------------|--|
| <b>Background:</b>       | MEF2D is a transcriptional activator which binds specifically to the MEF2 element, 5'-YTA[AT]4TAR-3', found in numerous muscle-specific, growth factor- and stress-induced genes. MEF2D mediates cellular functions not only in skeletal and cardiac muscle development, but also in neuronal differentiation and survival. MEF2D plays diverse roles in the control of cell growth, survival and apoptosis via p38 MAPK signaling in muscle-specific and/or growth factor-related transcription. MEF2D plays a critical role in the regulation of neuronal apoptosis. |
| <b>Synonyms:</b>         | DKFZp686l1536  |
| <b>Note:</b>             | Immunogen Sequence Homology: Pig: 100%; Rat: 100%; Horse: 100%; Human: 100%; Mouse: 100%; Bovine: 100%; Guinea pig: 100%; Rabbit: 93%; Dog: 86%  |
| <b>Protein Families:</b> | Transcription Factors  |

**Product images:**

WB Suggested Anti-MEF2D Antibody Titration:  
0.2-1 ug/ml; ELISA Titer: 1: 312500; Positive  
Control: Human kidney