

Product datasheet for **TA343566**

MEF2B (BORCS8-MEF2B) Rabbit Polyclonal Antibody

Product data:

Product Type:	Primary Antibodies
Applications:	WB
Recommended Dilution:	WB
Reactivity:	Human
Host:	Rabbit
Isotype:	IgG
Clonality:	Polyclonal
Immunogen:	The immunogen for anti-MEF2B antibody: synthetic peptide directed towards the N terminal of human MEF2B. Synthetic peptide located within the following region: MGRKKIQISRILDQRNRQVTFTRKRFGLMCKKAYELSVLCDCEIALIIFNS
Formulation:	Liquid. Purified antibody supplied in 1x PBS buffer with 0.09% (w/v) sodium azide and 2% sucrose. <i>Note that this product is shipped as lyophilized powder to China customers.</i>
Purification:	Affinity Purified
Conjugation:	Unconjugated
Storage:	Store at -20°C as received.
Stability:	Stable for 12 months from date of receipt.
Predicted Protein Size:	39 kDa
Gene Name:	BORCS8-MEF2B readthrough
Database Link:	NP_005910 Entrez Gene 4207 Human Q02080
Background:	This gene represents numerous read-through transcripts that span geneID:729991 and 100271849. Many read-through transcripts are predicted to be nonsense-mediated decay (NMD) candidates, and are thought to be non-coding. Some transcripts are predicted to be capable of translation reinitiation at a downstream AUG, resulting in expression of at least one isoform of myocyte enhancer factor 2B (MEF2B) from this read-through locus.
Synonyms:	LOC729991-MEF2B; MEF2B; MEF2BNB-MEF2B

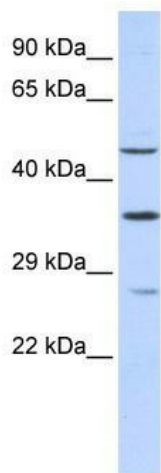


[View online »](#)

Note: Immunogen Sequence Homology: Dog: 100%; Pig: 100%; Rat: 100%; Horse: 100%; Human: 100%; Mouse: 100%; Bovine: 100%; Zebrafish: 100%; Sheep: 79%; Rabbit: 79%; Guinea pig: 79%

Protein Families: Transcription Factors

Product images:



WB Suggested Anti-MEF2B Antibody Titration:
0.2-1 ug/ml; ELISA Titer: 1: 62500; Positive
Control: 293T cell lysate