

Product datasheet for **TA343563**

RBM5 Rabbit Polyclonal Antibody

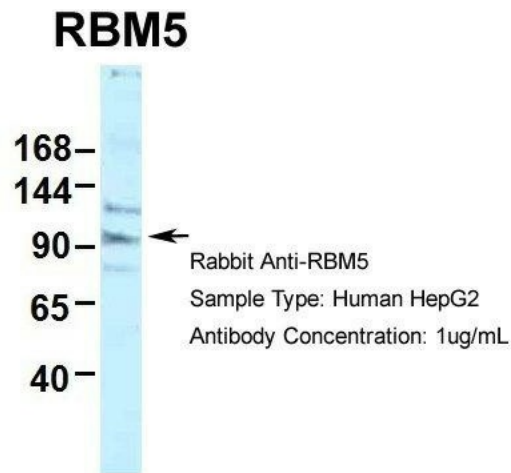
Product data:

Product Type:	Primary Antibodies
Applications:	WB
Recommended Dilution:	WB
Reactivity:	Human
Host:	Rabbit
Isotype:	IgG
Clonality:	Polyclonal
Immunogen:	The immunogen for anti-RBM5 antibody: synthetic peptide directed towards the N terminal of human RBM5. Synthetic peptide located within the following region: GSDKRVSRTERSGRYGSIIDRDDRDERESRRRRDSYKRSSDDRRGDRY
Formulation:	Liquid. Purified antibody supplied in 1x PBS buffer with 0.09% (w/v) sodium azide and 2% sucrose. <i>Note that this product is shipped as lyophilized powder to China customers.</i>
Purification:	Affinity Purified
Conjugation:	Unconjugated
Storage:	Store at -20°C as received.
Stability:	Stable for 12 months from date of receipt.
Predicted Protein Size:	92 kDa
Gene Name:	RNA binding motif protein 5
Database Link:	NP_005769 Entrez Gene 10181 Human P52756



[View online »](#)

Background:	RBM5 is a component of the spliceosome A complex. It regulates alternative splicing of a number of mRNAs. RBM5 may modulate splice site pairing after recruitment of the U1 and U2 snRNPs to the 5' and 3' splice sites of the intron. RBM5 may both positively and negatively regulate apoptosis by regulating the alternative splicing of several genes involved in this process, including FAS and CASP2/caspase-2. In the case of FAS, promotes exclusion of exon 6 thereby producing a soluble form of FAS that inhibits apoptosis. In the case of CASP2/caspase-2, RBM5 promotes exclusion of exon 9 thereby producing a catalytically active form of CASP2/Caspase-2 that induces apoptosis.
Synonyms:	G15; H37; LUCA15; RMB5
Note:	Immunogen Sequence Homology: Dog: 100%; Pig: 100%; Rat: 100%; Horse: 100%; Human: 100%; Mouse: 100%; Bovine: 100%; Rabbit: 100%; Guinea pig: 100%; Yeast: 80%
Protein Families:	Druggable Genome

Product images:

WB Suggested Anti-RBM5 Antibody Titration: 0.2-1 ug/ml; ELISA Titer: 1: 312500; Positive Control: HepG2 cell lysate. RBM5 is strongly supported by BioGPS gene expression data to be expressed in Human HepG2 cells