

## Product datasheet for **TA343560**

### ZNF263 Rabbit Polyclonal Antibody

#### Product data:

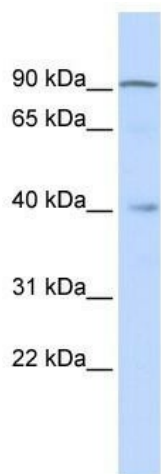
Product Type:	Primary Antibodies
Applications:	WB
Recommended Dilution:	WB
Reactivity:	Human
Host:	Rabbit
Isotype:	IgG
Clonality:	Polyclonal
Immunogen:	The immunogen for anti-ZNF263 antibody: synthetic peptide directed towards the middle region of human ZNF263. Synthetic peptide located within the following region: CHECGDSFSHSSNRIRHLRHTHTGERPYKCSECGESFSRSSRLMSHQRTHT
Formulation:	Liquid. Purified antibody supplied in 1x PBS buffer with 0.09% (w/v) sodium azide and 2% sucrose.
Purification:	Affinity Purified
Conjugation:	Unconjugated
Storage:	Store at -20°C as received.
Stability:	Stable for 12 months from date of receipt.
Predicted Protein Size:	77 kDa
Gene Name:	zinc finger protein 263
Database Link:	<a href="#">NP_005732</a> <a href="#">Entrez Gene 10127 Human</a> <a href="#">O14978</a>
Background:	ZNF263 belongs to the krueppel C2H2-type zinc-finger protein family. It contains 9 C2H2-type zinc fingers, 1 KRAB domain and 1 SCAN box domain. ZNF263 might play an important role in basic cellular processes as a transcriptional repressor.
Synonyms:	FPM315; ZKSCAN12; ZSCAN44
Note:	Immunogen Sequence Homology: Dog: 100%; Pig: 100%; Horse: 100%; Human: 100%; Bovine: 100%; Rabbit: 100%; Guinea pig: 100%; Rat: 93%; Mouse: 93%



[View online »](#)

Protein Families: Transcription Factors

**Product images:**



WB Suggested Anti-ZNF263 Antibody Titration:  
0.2-1 ug/ml; ELISA Titer: 1: 1562500; Positive  
Control: Human Liver