

## Product datasheet for **TA343559**

### TSFM Rabbit Polyclonal Antibody

#### Product data:

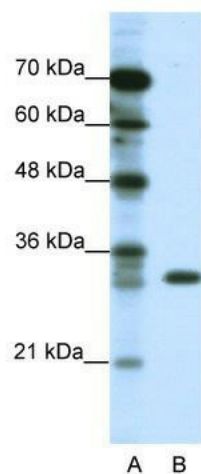
Product Type:	Primary Antibodies
Applications:	WB
Recommended Dilution:	WB
Reactivity:	Human
Host:	Rabbit
Isotype:	IgG
Clonality:	Polyclonal
Immunogen:	The immunogen for anti-TSFM antibody: synthetic peptide directed towards the C terminal of human TSFM. Synthetic peptide located within the following region: VVGMAPLSVGLDDEPGGEAETKMLSQPYLLDPSITLGQYVQPQGVSVVD
Formulation:	Liquid. Purified antibody supplied in 1x PBS buffer with 0.09% (w/v) sodium azide and 2% sucrose. <i>Note that this product is shipped as lyophilized powder to China customers.</i>
Purification:	Protein A purified
Conjugation:	Unconjugated
Storage:	Store at -20°C as received.
Stability:	Stable for 12 months from date of receipt.
Predicted Protein Size:	38 kDa
Gene Name:	Ts translation elongation factor, mitochondrial
Database Link:	<a href="#">NP_005717</a> <a href="#">Entrez Gene 10102 Human</a> <a href="#">P43897</a>
Background:	TSFM associates with the EF-Tu.GDP complex and induces the exchange of GDP to GTP. It remains bound to the aminoacyl-tRNA.EF-Tu.GTP complex up to the GTP hydrolysis stage on the ribosome. TSFM localizes in mitochondrion.
Synonyms:	EFTS; EFTSMT
Note:	Immunogen Sequence Homology: Dog: 100%; Pig: 100%; Horse: 100%; Human: 100%; Bovine: 100%; Rabbit: 100%; Guinea pig: 100%; Rat: 93%; Mouse: 92%



[View online »](#)

Protein Families: Transcription Factors

### Product images:



WB Suggested Anti-TSMF Antibody Titration: 1.25 ug/ml; ELISA Titer: 1: 312500; Positive Control: Jurkat cell lysate; There is BioGPS gene expression data showing that TSMF is expressed in Jurkat