

Product datasheet for **TA343555**

ZNF239 Rabbit Polyclonal Antibody

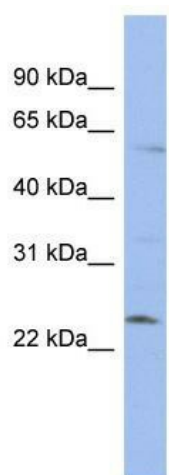
Product data:

Product Type:	Primary Antibodies
Applications:	WB
Recommended Dilution:	WB
Reactivity:	Human
Host:	Rabbit
Isotype:	IgG
Clonality:	Polyclonal
Immunogen:	The immunogen for anti-ZNF239 antibody: synthetic peptide directed towards the N terminal of human ZNF239. Synthetic peptide located within the following region: MASTITGSQDCIVNHRGEVDGPELDISPCQQWGEASSPISRNRDSVMTL
Formulation:	Liquid. Purified antibody supplied in 1x PBS buffer with 0.09% (w/v) sodium azide and 2% sucrose. <i>Note that this product is shipped as lyophilized powder to China customers.</i>
Purification:	Affinity Purified
Conjugation:	Unconjugated
Storage:	Store at -20°C as received.
Stability:	Stable for 12 months from date of receipt.
Predicted Protein Size:	51 kDa
Gene Name:	zinc finger protein 239
Database Link:	NP_005665 Entrez Gene 8187 Human Q16600
Background:	ZNF239 belongs to the krueppel C2H2-type zinc-finger protein family. It contains 9 C2H2-type zinc fingers. ZNF239 may be involved in transcriptional regulation.
Synonyms:	HOK-2; MOK2
Note:	Immunogen Sequence Homology: Human: 100%; Goat: 77%
Protein Families:	Transcription Factors



[View online »](#)

Product images:



WB Suggested Anti-ZNF239 Antibody Titration:
0.2-1 ug/ml; ELISA Titer: 1: 1562500; Positive
Control: HT1080 cell lysate