

## Product datasheet for **TA343554**

### KLF10 Rabbit Polyclonal Antibody

#### Product data:

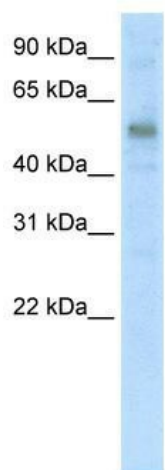
Product Type:	Primary Antibodies
Applications:	IHC, WB
Recommended Dilution:	WB
Reactivity:	Human
Host:	Rabbit
Isotype:	IgG
Clonality:	Polyclonal
Immunogen:	The immunogen for anti-KLF10 antibody: synthetic peptide directed towards the C terminal of human KLF10. Synthetic peptide located within the following region: RTHTGEKKFACPMCDRRFMRSDHCLKHARRHLSAKKLPNWQMEVSKLNDI
Formulation:	Liquid. Purified antibody supplied in 1x PBS buffer with 0.09% (w/v) sodium azide and 2% sucrose. <i>Note that this product is shipped as lyophilized powder to China customers.</i>
Purification:	Protein A purified
Conjugation:	Unconjugated
Storage:	Store at -20°C as received.
Stability:	Stable for 12 months from date of receipt.
Predicted Protein Size:	53 kDa
Gene Name:	Kruppel-like factor 10
Database Link:	<a href="#">NP_005646</a> <a href="#">Entrez Gene 7071 Human</a> <a href="#">Q13118</a>
Background:	KLF10 is a transcriptional repressor involved in the regulation of cell growth. KLF10 binds to the consensus sequence 5'-GGTGTG-3'.
Synonyms:	EGR-alpha; EGRA; TIEG; TIEG1
Note:	Immunogen Sequence Homology: Dog: 100%; Pig: 100%; Rat: 100%; Horse: 100%; Human: 100%; Mouse: 100%; Bovine: 100%; Rabbit: 100%; Zebrafish: 100%; Guinea pig: 100%



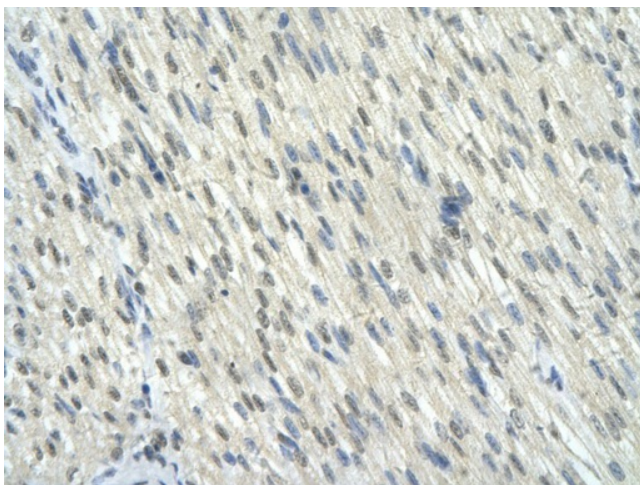
[View online »](#)

Protein Families: Druggable Genome, Transcription Factors

### Product images:



WB Suggested Anti-KLF10 Antibody Titration: 5.0 ug/ml; ELISA Titer: 1: 1562500; Positive Control: Human Placenta



Rabbit Anti-KLF10 antibody; Paraffin Embedded Tissue: Human Heart cell; Cellular Data: Epithelial cells of renal tubule; Antibody Concentration: 4.0-8.0 ug/ml; Magnification: 400X