

Product datasheet for **TA343552**

TCF20 Rabbit Polyclonal Antibody

Product data:

Product Type:	Primary Antibodies
Applications:	WB
Recommended Dilution:	WB
Reactivity:	Human
Host:	Rabbit
Isotype:	IgG
Clonality:	Polyclonal
Immunogen:	The immunogen for anti-TCF20 antibody: synthetic peptide directed towards the C terminal of human TCF20. Synthetic peptide located within the following region: HYPCAIDADCLLHEENFSVRCPKHKPPLPCPLPPLQNKTAKGSLSTEQSE
Formulation:	Liquid. Purified antibody supplied in 1x PBS buffer with 0.09% (w/v) sodium azide and 2% sucrose. <i>Note that this product is shipped as lyophilized powder to China customers.</i>
Purification:	Affinity Purified
Conjugation:	Unconjugated
Storage:	Store at -20°C as received.
Stability:	Stable for 12 months from date of receipt.
Predicted Protein Size:	212 kDa
Gene Name:	transcription factor 20 (AR1)
Database Link:	NP_005641 Entrez Gene 6942 Human Q9UGU0
Background:	The protein encoded by this gene binds a platelet-derived growth factor-responsive element in the matrix metalloproteinase 3 (stromelysin 1) promoter. The protein localizes to the nucleus and displays DNA-binding and transactivation activities. It is thought to be a transcriptional coactivator, enhancing the activity of transcription factors such as JUN and SP1.
Synonyms:	AR1; SPBP; TCF-20

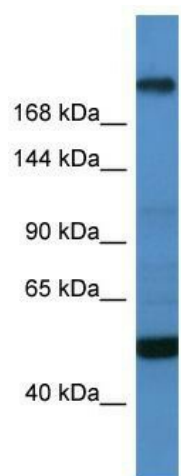


[View online »](#)

Note: Immunogen Sequence Homology: Dog: 100%; Horse: 100%; Human: 100%; Mouse: 100%; Bovine: 100%; Rabbit: 100%; Pig: 93%; Rat: 93%; Guinea pig: 93%

Protein Families: Druggable Genome, Transcription Factors

Product images:



WB Suggested Anti-TCF20 Antibody Titration: 0.2-1 ug/ml; ELISA Titer: 1: 62500; Positive Control: OVCAR-3 cell lysate; TCF20 is supported by BioGPS gene expression data to be expressed in OVCAR3