

Product datasheet for **TA343550**

TAF6 Rabbit Polyclonal Antibody

Product data:

Product Type:	Primary Antibodies
Applications:	WB
Recommended Dilution:	WB
Reactivity:	Human
Host:	Rabbit
Isotype:	IgG
Clonality:	Polyclonal
Immunogen:	The immunogen for anti-TAF6 antibody: synthetic peptide directed towards the N terminal of human TAF6. Synthetic peptide located within the following region: TVLPSESMKVVAESMGIAQIQEETCQLLTDEVSRIKEIAQDALKFMHMG
Formulation:	Liquid. Purified antibody supplied in 1x PBS buffer with 0.09% (w/v) sodium azide and 2% sucrose. <i>Note that this product is shipped as lyophilized powder to China customers.</i>
Purification:	Protein A purified
Conjugation:	Unconjugated
Storage:	Store at -20°C as received.
Stability:	Stable for 12 months from date of receipt.
Predicted Protein Size:	73 kDa
Gene Name:	TATA-box binding protein associated factor 6
Database Link:	NP_005632 Entrez Gene 6878 Human P49848



[View online »](#)

Background:

TFIID is composed of the TATA-binding protein (TBP) and a group of evolutionarily conserved proteins known as TBP-associated factors or TAFs. TAFs may participate in basal transcription, serve as coactivators, function in promoter recognition or modify general transcription factors (GTFs) to facilitate complex assembly and transcription initiation. TAF6 is one of the smaller subunits of TFIID that binds weakly to TBP but strongly to TAF1, the largest subunit of TFIID. One of the isoforms has been shown to preclude binding of one of the other TFIID subunits, thereby reducing transcription and initiating signals that trigger apoptosis.

Synonyms:

ALYUS; MGC:8964; TAF(II)70; TAF(II)80; TAF2E; TAFII-70; TAFII-80; TAFII70; TAFII80; TAFII85

Note:

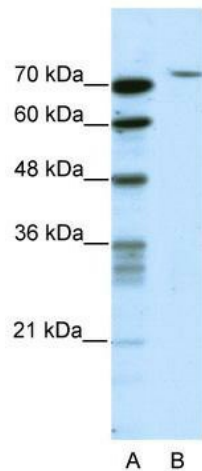
Immunogen Sequence Homology: Dog: 100%; Pig: 100%; Rat: 100%; Horse: 100%; Human: 100%; Mouse: 100%; Bovine: 100%; Rabbit: 100%; Guinea pig: 100%; Zebrafish: 92%

Protein Families:

Transcription Factors

Protein Pathways:

Basal transcription factors

Product images:

WB Suggested Anti-TAF6 Antibody Titration: 2.5 ug/ml; ELISA Titer: 1: 312500; Positive Control: HepG2 cell lysate