

Product datasheet for **TA343549**

SSX5 Rabbit Polyclonal Antibody

Product data:

Product Type:	Primary Antibodies
Applications:	WB
Recommended Dilution:	WB
Reactivity:	Human
Host:	Rabbit
Isotype:	IgG
Clonality:	Polyclonal
Immunogen:	The immunogen for Anti-SSX5 antibody is: synthetic peptide directed towards the C-terminal region of Human SSX5. Synthetic peptide located within the following region: ASGPQNNKGQLRPSGKLNTSEKVNKTSGPKRGKHAWTHRVRERKQLVIYE
Formulation:	Liquid. Purified antibody supplied in 1x PBS buffer with 0.09% (w/v) sodium azide and 2% sucrose. <i>Note that this product is shipped as lyophilized powder to China customers.</i>
Purification:	Affinity Purified
Conjugation:	Unconjugated
Storage:	Store at -20°C as received.
Stability:	Stable for 12 months from date of receipt.
Predicted Protein Size:	25 kDa
Gene Name:	SSX family member 5
Database Link:	NP_066295 Entrez Gene 6758 Human O60225



[View online »](#)

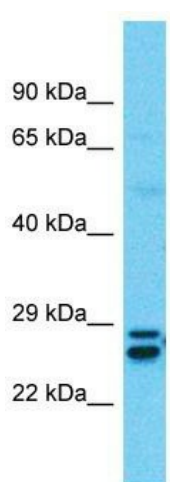
Background: The product of this gene belongs to the family of highly homologous synovial sarcoma X (SSX) breakpoint proteins. These proteins may function as transcriptional repressors. They are also capable of eliciting spontaneous humoral and cellular immune responses in cancer patients, and are potentially useful targets in cancer vaccine-based immunotherapy. While some of the related SSX genes are involved in t(X;18)(p11.2;q11.2) translocations that are characteristically found in all synovial sarcomas, this gene does not appear to be involved in such translocations. Two transcript variants encoding distinct isoforms have been identified for this gene.

Synonyms: MGC9494

Note: Immunogen Sequence Homology: Pig: 100%; Human: 100%; Rat: 90%; Mouse: 89%; Rabbit: 89%

Protein Families: Transcription Factors

Product images:



Host: Rabbit
Target Name: SSX5
Sample Tissue: Thymus Tumor Lysate
Antibody Dilution: 1.0µg/ml

Host: Rabbit; Target Name: SSX5; Sample Tissue: Thymus Tumor lysates; Antibody Dilution: 1.0 ug/ml