

Product datasheet for **TA343548**

SOX3 Rabbit Polyclonal Antibody

Product data:

Product Type:	Primary Antibodies
Applications:	WB
Recommended Dilution:	WB
Reactivity:	Human
Host:	Rabbit
Isotype:	IgG
Clonality:	Polyclonal
Immunogen:	The immunogen for anti-SOX3 antibody: synthetic peptide directed towards the C terminal of human SOX3. Synthetic peptide located within the following region: QRACLGDLRDMISMYLPPGGDAADAASPLPGGRLHGVHGHYQGAGTAVNG
Formulation:	Liquid. Purified antibody supplied in 1x PBS buffer with 0.09% (w/v) sodium azide and 2% sucrose. <i>Note that this product is shipped as lyophilized powder to China customers.</i>
Purification:	Protein A purified
Conjugation:	Unconjugated
Storage:	Store at -20°C as received.
Stability:	Stable for 12 months from date of receipt.
Predicted Protein Size:	45 kDa
Gene Name:	SRY-box 3
Database Link:	NP_005625 Entrez Gene 6658 Human P41225



[View online »](#)

Background:

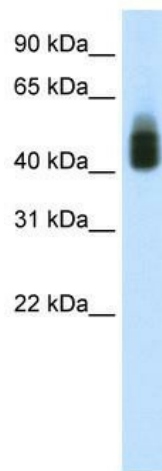
SOX3 is a member of the SOX (SRY-related HMG-box) family of transcription factors involved in the regulation of embryonic development and in the determination of the cell fate. The encoded protein may act as a transcriptional regulator after forming a protein complex with other proteins. Mutations in this gene have been associated with X-linked mental retardation with growth hormone deficiency. This gene encodes a member of the SOX (SRY-related HMG-box) family of transcription factors involved in the regulation of embryonic development and in the determination of the cell fate. The encoded protein may act as a transcriptional regulator after forming a protein complex with other proteins. Mutations in this gene have been associated with X-linked mental retardation with growth hormone deficiency.

Synonyms:

GHDX; MRGH; PHP; PHPX; SOXB

Note:

Immunogen Sequence Homology: Dog: 100%; Pig: 100%; Human: 100%; Mouse: 100%; Rabbit: 100%; Guinea pig: 100%; Rat: 77%; Zebrafish: 77%

Product images:

WB Suggested Anti-SOX3 Antibody Titration: 1.25 ug/ml; ELISA Titer: 1: 312500; Positive Control: MCF7 cell lysate SOX3 is supported by BioGPS gene expression data to be expressed in MCF7