

Product datasheet for **TA343546**

Calpain 15 (CAPN15) Rabbit Polyclonal Antibody

Product data:

Product Type:	Primary Antibodies
Applications:	WB
Recommended Dilution:	WB
Reactivity:	Human
Host:	Rabbit
Isotype:	IgG
Clonality:	Polyclonal
Immunogen:	The immunogen for anti-SOLH antibody: synthetic peptide directed towards the middle region of human SOLH. Synthetic peptide located within the following region: FNVVSTRGSLRTQDSVPPLHRQVLVLSQLEGNAGFSITHRLAHRKAAQA
Formulation:	Liquid. Purified antibody supplied in 1x PBS buffer with 0.09% (w/v) sodium azide and 2% sucrose. <i>Note that this product is shipped as lyophilized powder to China customers.</i>
Purification:	Affinity Purified
Conjugation:	Unconjugated
Storage:	Store at -20°C as received.
Stability:	Stable for 12 months from date of receipt.
Predicted Protein Size:	117 kDa
Gene Name:	calpain 15
Database Link:	NP_005623 Entrez Gene 6650 Human O75808
Background:	SOLH is a protein containing zinc-finger-like repeats and a calpain-like protease domain. SOLH may function as a transcription factor, RNA-binding protein, or in protein-protein interactions during visual system development. This gene encodes a protein containing zinc-finger-like repeats and a calpain-like protease domain. The encoded protein may function as a transcription factor, RNA-binding protein, or in protein-protein interactions during visual system development.



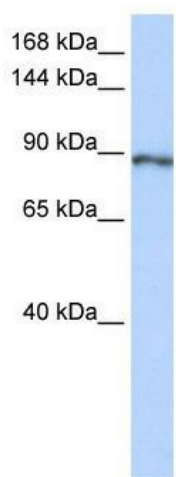
[View online »](#)

Synonyms: SOLH

Note: Immunogen Sequence Homology: Dog: 100%; Pig: 100%; Horse: 100%; Human: 100%; Mouse: 100%; Bovine: 100%; Rabbit: 100%; Zebrafish: 100%; Guinea pig: 100%

Protein Families: Druggable Genome

Product images:



WB Suggested Anti-SOLH Antibody Titration: 0.2-1 ug/ml; ELISA Titer: 1: 312500; Positive Control: Human Lung