

## Product datasheet for **TA343543**

### NFIC Rabbit Polyclonal Antibody

#### Product data:

Product Type:	Primary Antibodies
Applications:	WB
Recommended Dilution:	WB
Reactivity:	Human, Mouse
Host:	Rabbit
Isotype:	IgG
Clonality:	Polyclonal
Immunogen:	The immunogen for Anti-NFIC antibody is: synthetic peptide directed towards the N-terminal region of Human NFIC. Synthetic peptide located within the following region: MDEFHPFIEALLPHVRAFAYTWFNLQARKRKYFKKHEKRMSKDEERAVKD
Formulation:	Liquid. Purified antibody supplied in 1x PBS buffer with 0.09% (w/v) sodium azide and 2% sucrose. <i>Note that this product is shipped as lyophilized powder to China customers.</i>
Purification:	Affinity Purified
Conjugation:	Unconjugated
Storage:	Store at -20°C as received.
Stability:	Stable for 12 months from date of receipt.
Predicted Protein Size:	54 kDa
Gene Name:	nuclear factor I C
Database Link:	<a href="#">NP_995315</a> <a href="#">Entrez Gene 18029 Mouse</a> <a href="#">Entrez Gene 4782 Human</a> <a href="#">P08651</a>
Background:	The protein encoded by this gene belongs to the CTF/NF-I family. These are dimeric DNA-binding proteins, and function as cellular transcription factors and as replication factors for adenovirus DNA replication. Alternatively spliced transcript variants encoding different isoforms have been described for this gene.
Synonyms:	CTF; CTF5; NF-I; NFI

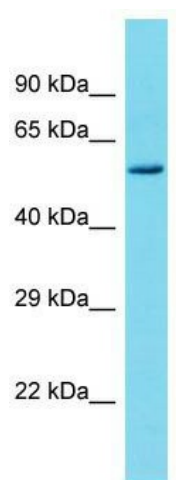


[View online »](#)

**Note:** Immunogen Sequence Homology: Dog: 100%; Pig: 100%; Rat: 100%; Human: 100%; Mouse: 100%; Rabbit: 100%; Zebrafish: 100%; Guinea pig: 100%; Horse: 93%; Sheep: 93%; Bovine: 93%

**Protein Families:** Transcription Factors

**Product images:**



Host: Rabbit; Target Name: NFIC; Sample Tissue: Uterus Tumor lysates; Antibody Dilution: 1.0 ug/ml