

Product datasheet for **TA343542**

HOX11 (TLX1) Rabbit Polyclonal Antibody

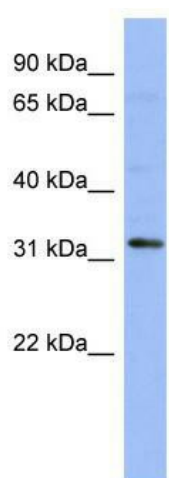
Product data:

Product Type:	Primary Antibodies
Applications:	WB
Recommended Dilution:	WB
Reactivity:	Human
Host:	Rabbit
Isotype:	IgG
Clonality:	Polyclonal
Immunogen:	The immunogen for anti-TLX1 antibody: synthetic peptide directed towards the N terminal of human TLX1. Synthetic peptide located within the following region: MEHLGPHHLHPGHAEPISFGIDQILNSPDQGGCMGPASRLQDGEYGLGCL
Formulation:	Liquid. Purified antibody supplied in 1x PBS buffer with 0.09% (w/v) sodium azide and 2% sucrose. <i>Note that this product is shipped as lyophilized powder to China customers.</i>
Purification:	Affinity Purified
Conjugation:	Unconjugated
Storage:	Store at -20°C as received.
Stability:	Stable for 12 months from date of receipt.
Predicted Protein Size:	34 kDa
Gene Name:	T-cell leukemia homeobox 1
Database Link:	NP_005512 Entrez Gene 3195 Human P31314
Background:	TLX1 contains 1 homeobox DNA-binding domain. TLX1 controls the genesis of the spleen. A chromosomal aberration involving TLX1, translocation t(10;14)(q24;q11) with TCRD, may be a cause of a form of T-cell acute lymphoblastic leukemia (T-ALL).
Synonyms:	HOX11; TCL3
Note:	Immunogen Sequence Homology: Dog: 100%; Pig: 100%; Rat: 100%; Human: 100%; Mouse: 100%; Bovine: 100%; Rabbit: 100%; Guinea pig: 100%



[View online »](#)

Product images:



WB Suggested Anti-TLX1 Antibody Titration: 0.2-1 ug/ml; ELISA Titer: 1: 1562500; Positive Control: 721_B cell lysate; TLX1 is supported by BioGPS gene expression data to be expressed in 721_B