

## Product datasheet for **TA343538**

### TP53BP2 Rabbit Polyclonal Antibody

#### Product data:

Product Type:	Primary Antibodies
Applications:	WB
Recommended Dilution:	WB
Reactivity:	Human
Host:	Rabbit
Isotype:	IgG
Clonality:	Polyclonal
Immunogen:	The immunogen for anti-TP53BP2 antibody: synthetic peptide directed towards the N terminal of human TP53BP2. Synthetic peptide located within the following region: TLAELQEMASRQQQIEAQQQLLATKEQRLKFLKQQDQRQQQVAEQEKL
Formulation:	Liquid. Purified antibody supplied in 1x PBS buffer with 0.09% (w/v) sodium azide and 2% sucrose. <i>Note that this product is shipped as lyophilized powder to China customers.</i>
Purification:	Affinity Purified
Conjugation:	Unconjugated
Storage:	Store at -20°C as received.
Stability:	Stable for 12 months from date of receipt.
Predicted Protein Size:	124 kDa
Gene Name:	tumor protein p53 binding protein 2
Database Link:	<a href="#">NP_001026855</a> <a href="#">Entrez Gene 7159 Human Q13625</a>
Background:	TP53BP2 is a member of the ASPP (apoptosis-stimulating protein of p53) family of p53 interacting proteins. TP53BP2 contains four ankyrin repeats and an SH3 domain involved in protein-protein interactions. TP53BP2 is localized to the perinuclear region of the cytoplasm, and regulates apoptosis and cell growth through interactions with other regulatory molecules including members of the p53 family.
Synonyms:	53BP2; ASPP2; BBP; P53BP2; PPP1R13A

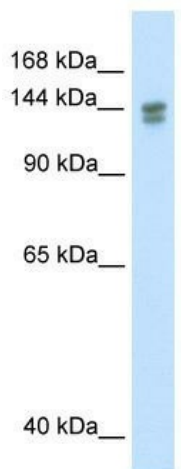


[View online »](#)

**Note:** Immunogen Sequence Homology: Dog: 100%; Pig: 100%; Rat: 100%; Horse: 100%; Human: 100%; Mouse: 100%; Bovine: 100%; Rabbit: 100%; Guinea pig: 100%; Zebrafish: 86%

**Protein Families:** Druggable Genome

**Product images:**



WB Suggested Anti-TP53BP2 Antibody Titration:  
0.2-1 ug/ml; ELISA Titer: 1: 1562500; Positive  
Control: Human Thymus