

Product datasheet for **TA343537**

TAL2 Rabbit Polyclonal Antibody

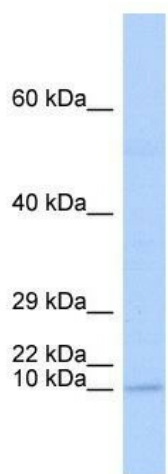
Product data:

Product Type:	Primary Antibodies
Applications:	WB
Recommended Dilution:	WB
Reactivity:	Human
Host:	Rabbit
Isotype:	IgG
Clonality:	Polyclonal
Immunogen:	The immunogen for anti-TAL2 antibody: synthetic peptide directed towards the N terminal of human TAL2. Synthetic peptide located within the following region: TRKIFTNTRERWRQQNVNSAFAKLRKLIPTHTPPDKKLSKNETLRLAMRYI
Formulation:	Liquid. Purified antibody supplied in 1x PBS buffer with 0.09% (w/v) sodium azide and 2% sucrose.
Purification:	Affinity Purified
Conjugation:	Unconjugated
Storage:	Store at -20°C as received.
Stability:	Stable for 12 months from date of receipt.
Predicted Protein Size:	12 kDa
Gene Name:	T-cell acute lymphocytic leukemia 2
Database Link:	NP_005412 Entrez Gene 6887 Human Q16559
Background:	TAL2 is a helix-loop-helix protein. Translocations between this gene on chromosome 9 and the T-cell receptor beta-chain locus on chromosome 7 have been associated with activation of the T-cell acute lymphocytic leukemia 2 gene and T-cell acute lymphoblastic leukemia.
Synonyms:	bHLHa19; T-cell acute lymphocytic leukemia 2
Note:	Immunogen Sequence Homology: Dog: 100%; Pig: 100%; Human: 100%; Bovine: 100%; Guinea pig: 100%; Rat: 93%; Horse: 93%; Mouse: 92%; Rabbit: 92%; Zebrafish: 92%



[View online »](#)

Protein Families: Druggable Genome

Product images:

WB Suggested Anti-TAL2 Antibody Titration: 0.2-1 ug/ml; ELISA Titer: 1: 1562500; Positive Control: Human brain