

Product datasheet for **TA343534**

c-Myb (MYB) Rabbit Polyclonal Antibody

Product data:

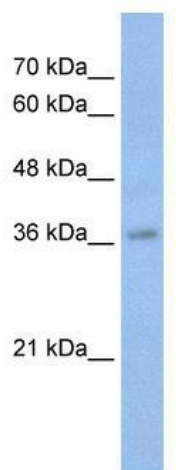
Product Type:	Primary Antibodies
Applications:	IHC, WB
Recommended Dilution:	WB, IHC
Reactivity:	Human
Host:	Rabbit
Isotype:	IgG
Clonality:	Polyclonal
Immunogen:	The immunogen for anti-MYB antibody: synthetic peptide directed towards the N terminal of human MYB. Synthetic peptide located within the following region: YDGLLPKSGKRHLGKTRWTRREEDEKLKLVNQNGTDDWKVIANYLPNRTD
Formulation:	Liquid. Purified antibody supplied in 1x PBS buffer with 0.09% (w/v) sodium azide and 2% sucrose. <i>Note that this product is shipped as lyophilized powder to China customers.</i>
Purification:	Affinity Purified
Conjugation:	Unconjugated
Storage:	Store at -20°C as received.
Stability:	Stable for 12 months from date of receipt.
Predicted Protein Size:	73 kDa
Gene Name:	MYB proto-oncogene, transcription factor
Database Link:	NP_001123644 Entrez Gene 4602 Human P10242
Background:	MYB may be a transcriptional activator; DNA-binding protein that specifically recognize the sequence 5'-YAAC[GT]G-3'. It plays an important role in the control of proliferation and differentiation of hematopoietic progenitor cells.
Synonyms:	c-myb; c-myb_CDS; Cmyb; efg
Note:	Immunogen Sequence Homology: Dog: 100%; Pig: 100%; Rat: 100%; Horse: 100%; Human: 100%; Mouse: 100%; Bovine: 100%; Rabbit: 100%; Guinea pig: 100%; Zebrafish: 85%



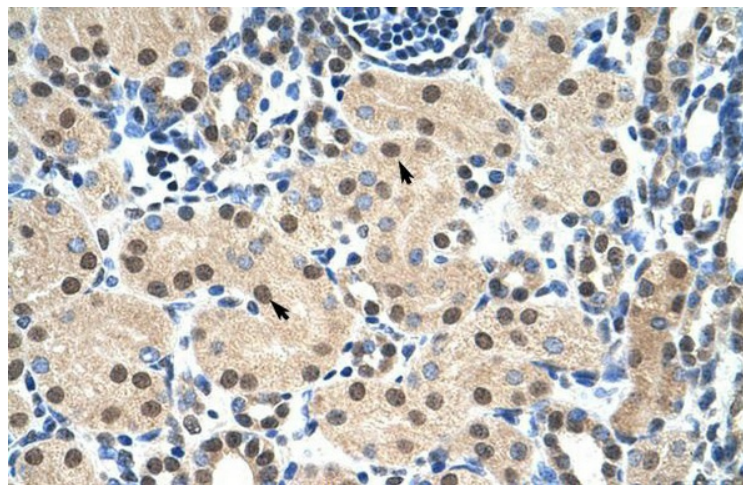
[View online »](#)

Protein Families: Druggable Genome, ES Cell Differentiation/IPS, Stem cell - Pluripotency, Transcription Factors

Product images:



WB Suggested Anti-MYB Antibody Titration: 0.2-1 ug/ml; Positive Control: HepG2 cell lysate



Human kidney