

Product datasheet for **TA343531**

c Maf (MAF) Rabbit Polyclonal Antibody

Product data:

Product Type:	Primary Antibodies
Applications:	IHC, WB
Recommended Dilution:	WB
Reactivity:	Human
Host:	Rabbit
Isotype:	IgG
Clonality:	Polyclonal
Immunogen:	The immunogen for Anti-MAF antibody is: synthetic peptide directed towards the C-terminal region of Human MAF. Synthetic peptide located within the following region: DAYKEKYEKLVSSENGSSSDNPSSPEFFITEPTRKLEPSVGYATFWK
Formulation:	Liquid. Purified antibody supplied in 1x PBS buffer with 0.09% (w/v) sodium azide and 2% sucrose. <i>Note that this product is shipped as lyophilized powder to China customers.</i>
Purification:	Affinity Purified
Conjugation:	Unconjugated
Storage:	Store at -20°C as received.
Stability:	Stable for 12 months from date of receipt.
Predicted Protein Size:	42 kDa
Gene Name:	MAF bZIP transcription factor
Database Link:	NP_005351 Entrez Gene 4094 Human O75444



[View online »](#)

Background:

The protein encoded by this gene is a DNA-binding, leucine zipper-containing transcription factor that acts as a homodimer or as a heterodimer. Depending on the binding site and binding partner, the encoded protein can be a transcriptional activator or repressor. This protein plays a role in the regulation of several cellular processes, including embryonic lens fiber cell development, increased T-cell susceptibility to apoptosis, and chondrocyte terminal differentiation. Defects in this gene are a cause of juvenile-onset pulverulent cataract as well as congenital cerulean cataract 4 (CCA4). Two transcript variants encoding different isoforms have been found for this gene.

Synonyms:

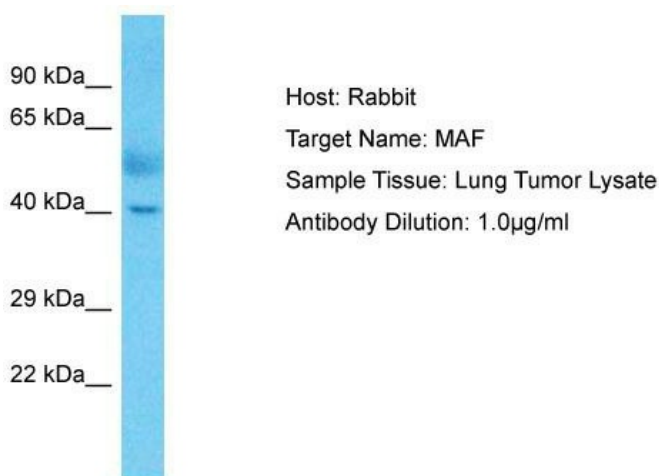
c-MAF; CCA4; CTRCT21

Note:

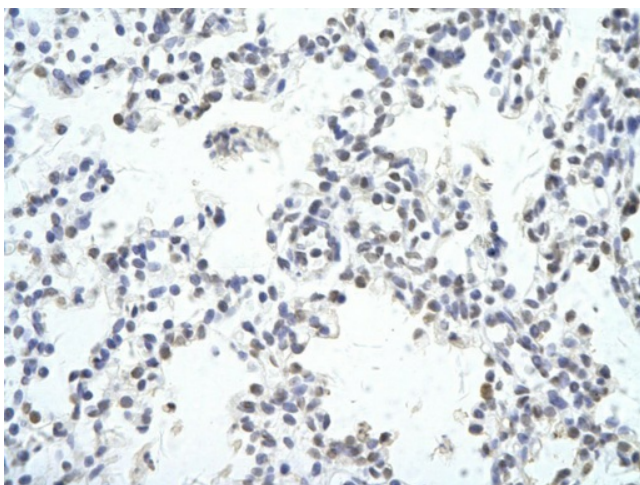
Immunogen Sequence Homology: Human: 100%; Horse: 93%

Protein Families:

Druggable Genome, Transcription Factors

Product images:

Host: Rabbit; Target Name: MAF; Sample Tissue: Lung Tumor lysates; Antibody Dilution: 1.0 µg/ml



Rabbit Anti-MAF Antibody; Paraffin Embedded Tissue: Human Lung cell; Cellular Data: Epithelial cells of renal tubule; Antibody Concentration: 4.0-8.0 µg/ml; Magnification: 400X