

## Product datasheet for **TA343529**

### Smad4 Rabbit Polyclonal Antibody

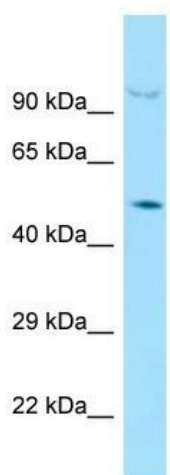
#### Product data:

Product Type:	Primary Antibodies
Applications:	WB
Recommended Dilution:	WB
Reactivity:	Mouse
Host:	Rabbit
Isotype:	IgG
Clonality:	Polyclonal
Immunogen:	The immunogen for Anti-Smad4 antibody is: synthetic peptide directed towards the C-terminal region of Mouse Smad4. Synthetic peptide located within the following region: AAAGIGVDDLRRRLCILRMSFVKGWGPDYPRQSIKETPCWIEIHLHRALQL
Formulation:	Liquid. Purified antibody supplied in 1x PBS buffer with 0.09% (w/v) sodium azide and 2% sucrose. <i>Note that this product is shipped as lyophilized powder to China customers.</i>
Purification:	Affinity Purified
Conjugation:	Unconjugated
Storage:	Store at -20°C as received.
Stability:	Stable for 12 months from date of receipt.
Predicted Protein Size:	50 kDa
Gene Name:	SMAD family member 4
Database Link:	<a href="#">NP_032566</a> <a href="#">Entrez Gene 17128 Mouse P97471</a>
Background:	The function of this protein remains unknown.
Synonyms:	DPC4; hSMAD4; JIP; MADH4; OTTHUMP00000163548
Note:	Immunogen Sequence Homology: Dog: 100%; Pig: 100%; Rat: 100%; Horse: 100%; Human: 100%; Mouse: 100%; Sheep: 100%; Bovine: 100%; Rabbit: 100%; Zebrafish: 100%; Guinea pig: 100%; Goat: 93%



[View online »](#)

## Product images:



Host: Rabbit  
Target Name: Smad4  
Sample Tissue: Mouse Testis Lysate  
Antibody Dilution: 1.0 $\mu$ g/ml

Host: Rabbit; Target Name: Smad4; Sample  
Tissue: Mouse Testis lysates; Antibody Dilution:  
1.0 ug/ml