

Product datasheet for **TA343528**

SMAD4 Rabbit Polyclonal Antibody

Product data:

| | |
|-------------------------|---|
| Product Type: | Primary Antibodies |
| Applications: | IHC, WB |
| Recommended Dilution: | WB |
| Reactivity: | Human, Mouse |
| Host: | Rabbit |
| Isotype: | IgG |
| Clonality: | Polyclonal |
| Immunogen: | The immunogen for anti-SMAD4 antibody: synthetic peptide directed towards the N terminal of human SMAD4. Synthetic peptide located within the following region: MDNMSITNTPTSNDACLSIVHSLMCHRQGGESETFAKRAIESLVKKLKEK |
| Formulation: | Liquid. Purified antibody supplied in 1x PBS buffer with 0.09% (w/v) sodium azide and 2% sucrose. <i>Note that this product is shipped as lyophilized powder to China customers.</i> |
| Purification: | Affinity Purified |
| Conjugation: | Unconjugated |
| Storage: | Store at -20°C as received. |
| Stability: | Stable for 12 months from date of receipt. |
| Predicted Protein Size: | 60 kDa |
| Gene Name: | SMAD family member 4 |
| Database Link: | NP_005350 Entrez Gene 17128 Mouse Entrez Gene 4089 Human Q13485 |
| Background: | SMAD4 is one of the Smad family members, which are essential intracellular signalling components of the transforming growth factor-beta (TGF-beta) superfamily. Smad2 and Smad3 are structurally highly similar and mediate TGF-beta signals. Smad4 is distantl |
| Synonyms: | DPC4; JIP; MADH4; MYHRS |



[View online »](#)

Note: Immunogen Sequence Homology: Dog: 100%; Pig: 100%; Rat: 100%; Goat: 100%; Horse: 100%; Human: 100%; Mouse: 100%; Sheep: 100%; Bovine: 100%; Rabbit: 100%; Zebrafish: 100%; Guinea pig: 100%

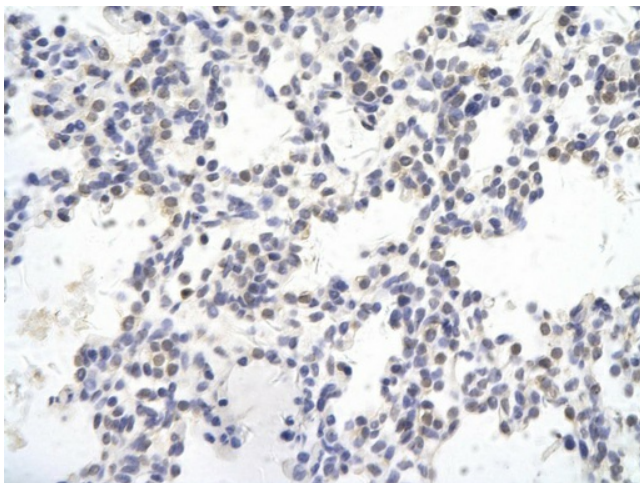
Protein Families: Druggable Genome, Transcription Factors

Protein Pathways: Adherens junction, Cell cycle, Chronic myeloid leukemia, Colorectal cancer, Pancreatic cancer, Pathways in cancer, TGF-beta signaling pathway, Wnt signaling pathway

Product images:



WB Suggested Anti-SMAD4 Antibody Titration:
0.2-1 ug/ml; ELISA Titer: 1: 312500; Positive
Control: 293T cell lysate; SMAD4 is supported by
BioGPS gene expression data to be expressed in
HEK293T



Rabbit Anti-SMAD4 antibody; Paraffin Embedded
Tissue: Human Lung cell; Cellular Data: Epithelial
cells of renal tubule; Antibody Concentration: 4.0-
8.0 ug/ml; Magnification: 400X