

Product datasheet for **TA343527**

HCFC1 Rabbit Polyclonal Antibody

Product data:

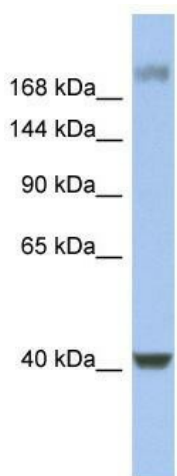
Product Type:	Primary Antibodies
Applications:	WB
Recommended Dilution:	WB
Reactivity:	Human
Host:	Rabbit
Isotype:	IgG
Clonality:	Polyclonal
Immunogen:	The immunogen for anti-HCFC1 antibody: synthetic peptide directed towards the middle region of human HCFC1. Synthetic peptide located within the following region: ARNEKGYGPATQVRWLQETSKDSSGTPANKRPMSSPEMKSAPKSKADG
Formulation:	Liquid. Purified antibody supplied in 1x PBS buffer with 0.09% (w/v) sodium azide and 2% sucrose. <i>Note that this product is shipped as lyophilized powder to China customers.</i>
Purification:	Affinity Purified
Conjugation:	Unconjugated
Storage:	Store at -20°C as received.
Stability:	Stable for 12 months from date of receipt.
Predicted Protein Size:	209 kDa
Gene Name:	host cell factor C1
Database Link:	NP_005325 Entrez Gene 3054 Human P51610
Background:	HCFC1 is a member of the host cell factor family with five Kelch repeats, a fibronectin-like motif, and six HCF repeats, each of which contains a highly specific cleavage signal. This nuclear coactivator is proteolytically cleaved at one of the six possib
Synonyms:	CFF; HCF; HCF-1; HCF1; HFC1; MRX3; PPP1R89; VCAF
Note:	Immunogen Sequence Homology: Dog: 100%; Pig: 100%; Rat: 100%; Horse: 100%; Human: 100%; Mouse: 100%; Bovine: 100%; Rabbit: 100%; Guinea pig: 92%



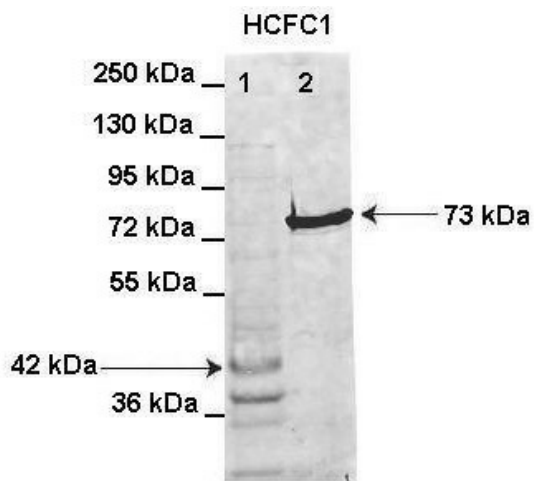
[View online »](#)

Protein Families: Transcription Factors

Product images:

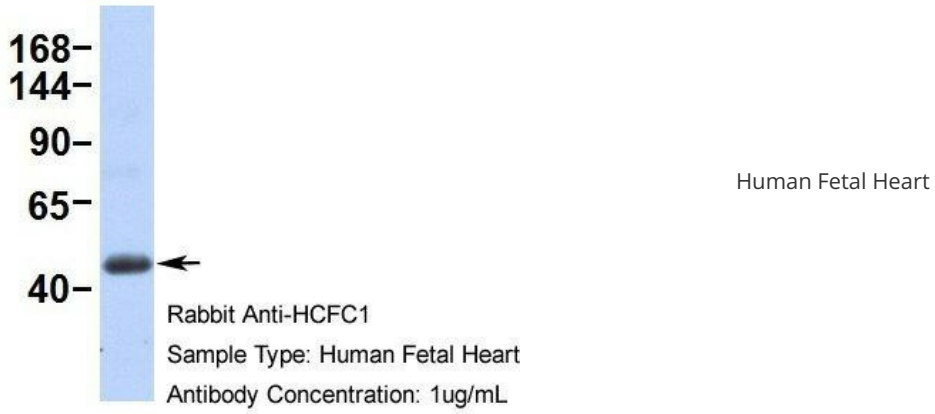


WB Suggested Anti-HCFC1 Antibody Titration: 0.2-1 ug/ml; ELISA Titer: 1: 1562500; Positive Control: Human Stomach



Lanes: Lane 1: HIS-HCFC1 16-363aa (42kD) transformed bacteria lysate; Lane 2: GFP-HCFC1 363-2002aa (73kD) transformed bacteria lysate elution sample; Primary Antibody Dilution: 1: 1000; Secondary Antibody: Anti-rabbit AlexaFluor 680; Secondary Antibody Dilu

HCFC1



HCFC1

