

Product datasheet for **TA343526**

HCFC1 Rabbit Polyclonal Antibody

Product data:

Product Type:	Primary Antibodies
Applications:	WB
Recommended Dilution:	WB
Reactivity:	Human
Host:	Rabbit
Isotype:	IgG
Clonality:	Polyclonal
Immunogen:	The immunogen for anti-HCFC1 antibody: synthetic peptide directed towards the N terminal of human HCFC1. Synthetic peptide located within the following region: GTRLLVFGGMVEYGKYSNDLYELQASRWEWKRLKAKTPKNGPPPCPRLGH
Formulation:	Liquid. Purified antibody supplied in 1x PBS buffer with 0.09% (w/v) sodium azide and 2% sucrose. <i>Note that this product is shipped as lyophilized powder to China customers.</i>
Purification:	Protein A purified
Conjugation:	Unconjugated
Storage:	Store at -20°C as received.
Stability:	Stable for 12 months from date of receipt.
Predicted Protein Size:	45 kDa
Gene Name:	host cell factor C1
Database Link:	NP_005325 Entrez Gene 3054 Human P51610

Background: HCFC1 is a member of the host cell factor family with five Kelch repeats, a fibronectin-like motif, and six HCF repeats, each of which contains a highly specific cleavage signal. This nuclear coactivator is proteolytically cleaved at one of the six possible sites, resulting in the creation of an N-terminal chain and the corresponding C-terminal chain. The final form of this protein consists of noncovalently bound N- and C-terminal chains. The protein is involved in control of the cell cycle and transcriptional regulation during herpes simplex virus infection.



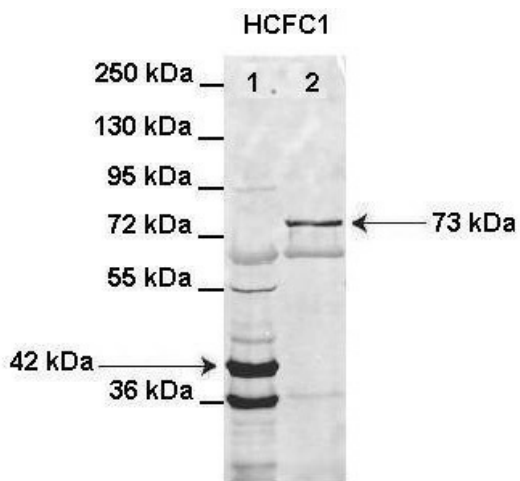
[View online »](#)

Synonyms: CFF; HCF; HCF-1; HCF1; HFC1; MRX3; PPP1R89; VCAF

Note: Immunogen Sequence Homology: Dog: 100%; Pig: 100%; Rat: 100%; Horse: 100%; Human: 100%; Mouse: 100%; Bovine: 100%; Rabbit: 100%; Guinea pig: 100%; Zebrafish: 92%

Protein Families: Transcription Factors

Product images:



Lanes: Lane 1: HIS-HCFC1 16-363aa (42kD) transformed bacteria lysate; Lane 2: GFP-HCFC1 363-2002aa (73kD) transformed bacteria lysate elution sample; Primary Antibody Dilution: 1: 1000; Secondary Antibody: Anti-rabbit AlexaFluor 680; Secondary Antibody Dilu



WB Suggested Anti-HCFC1 Antibody Titration: 1.25 ug/ml; Positive Control: HepG2 cell lysate; HCFC1 is strongly supported by BioGPS gene expression data to be expressed in Human HepG2 cells