

Product datasheet for **TA343524**

FOXG1 Rabbit Polyclonal Antibody

Product data:

Product Type:	Primary Antibodies
Applications:	WB
Recommended Dilution:	WB
Reactivity:	Human
Host:	Rabbit
Isotype:	IgG
Clonality:	Polyclonal
Immunogen:	The immunogen for anti-FOXG1B antibody: synthetic peptide directed towards the C terminal of human FOXG1B. Synthetic peptide located within the following region: STSMSARATSSSTSPQAPSTLPCESLRPSLPSFTTGLSGGLSDYFTHQNQ
Formulation:	Liquid. Purified antibody supplied in 1x PBS buffer with 0.09% (w/v) sodium azide and 2% sucrose. <i>Note that this product is shipped as lyophilized powder to China customers.</i>
Purification:	Protein A purified
Conjugation:	Unconjugated
Storage:	Store at -20°C as received.
Stability:	Stable for 12 months from date of receipt.
Predicted Protein Size:	52 kDa
Gene Name:	forkhead box G1
Database Link:	NP_005240 Entrez Gene 2290 Human P55316

Background: FOXG1B belongs to the forkhead family of transcription factors which is characterized by a distinct forkhead domain. The specific function of FOXG1B has not yet been determined; however, it may play a role in the development of the brain and telencephalon. This gene belongs to the forkhead family of transcription factors which is characterized by a distinct forkhead domain. The specific function of this gene has not yet been determined; however, it may play a role in the development of the brain and telencephalon.



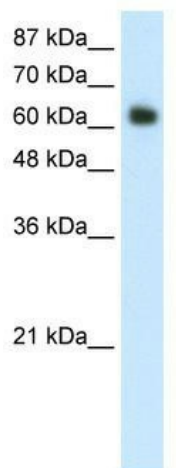
[View online »](#)

Synonyms: BF1; BF2; FHKL3; FKH2; FKHL1; FKHL2; FKHL3; FKHL4; FOXG1A; FOXG1B; FOXG1C; HBF-1; HBF-2; HBF-3

Note: Immunogen Sequence Homology: Dog: 100%; Rat: 100%; Horse: 100%; Human: 100%; Mouse: 100%; Bovine: 100%; Zebrafish: 93%

Protein Families: Druggable Genome, Transcription Factors

Product images:



WB Suggested Anti-FOXG1B Antibody Titration:
1.25 ug/ml; ELISA Titer: 1: 312500; Positive
Control: Transfected 293T