

## Product datasheet for **TA343523**

### FOXG1 Rabbit Polyclonal Antibody

#### Product data:

Product Type:	Primary Antibodies
Applications:	IHC, WB
Recommended Dilution:	WB, IHC
Reactivity:	Human
Host:	Rabbit
Isotype:	IgG
Clonality:	Polyclonal
Immunogen:	The immunogen for anti-FOXG1B antibody: synthetic peptide directed towards the N terminal of human FOXG1B. Synthetic peptide located within the following region: MLDMGDRKEVKMIPKSSFSINSLVPEAVQNDNHHASHGHHNSHHPQHSHH
Formulation:	Liquid. Purified antibody supplied in 1x PBS buffer with 0.09% (w/v) sodium azide and 2% sucrose. <i>Note that this product is shipped as lyophilized powder to China customers.</i>
Purification:	Protein A purified
Conjugation:	Unconjugated
Storage:	Store at -20°C as received.
Stability:	Stable for 12 months from date of receipt.
Predicted Protein Size:	52 kDa
Gene Name:	forkhead box G1
Database Link:	<a href="#">NP_005240</a> <a href="#">Entrez Gene 2290 Human</a> <a href="#">P55316</a>



[View online »](#)

**Background:**

FOXG1B belongs to the forkhead family of transcription factors which is characterized by a distinct forkhead domain. The specific function of FOXG1B has not yet been determined; however, it may play a role in the development of the brain and telencephalon. This gene belongs to the forkhead family of transcription factors which is characterized by a distinct forkhead domain. The specific function of this gene has not yet been determined; however, it may play a role in the development of the brain and telencephalon. This gene belongs to the forkhead family of transcription factors which is characterized by a distinct forkhead domain. The specific function of this gene has not yet been determined; however, it may play a role in the development of the brain and telencephalon.

**Synonyms:**

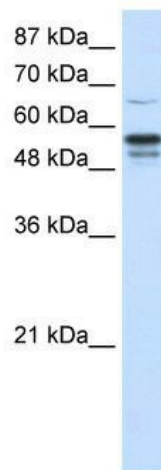
BF1; BF2; FHL3; FKHL2; FKHL1; FKHL2; FKHL3; FKHL4; FOXG1A; FOXG1B; FOXG1C; HBF-1; HBF-2; HBF-3

**Note:**

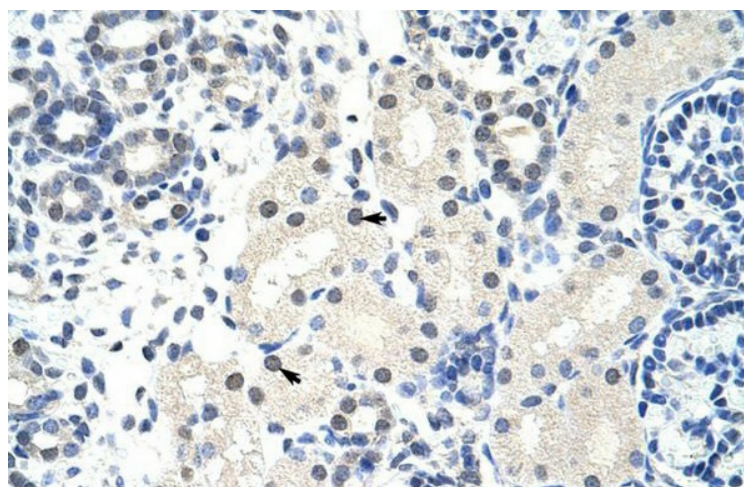
Immunogen Sequence Homology: Rat: 100%; Human: 100%; Mouse: 100%; Zebrafish: 93%

**Protein Families:**

Druggable Genome, Transcription Factors

**Product images:**

WB Suggested Anti-FOXG1B Antibody Titration:  
1.25 ug/ml; Positive Control: HepG2 cell lysate



Human kidney