

## Product datasheet for **TA343522**

### **EWSR1 Rabbit Polyclonal Antibody**

#### **Product data:**

|                         |  |
|-------------------------|--|
| Product Type:           | Primary Antibodies   |
| Applications:           | WB   |
| Recommended Dilution:   | WB   |
| Reactivity:             | Human  |
| Host:                   | Rabbit   |
| Isotype:                | IgG  |
| Clonality:              | Polyclonal   |
| Immunogen:              | The immunogen for anti-EWSR1 antibody: synthetic peptide directed towards the middle region of human EWSR1. Synthetic peptide located within the following region:<br>RGGFGGRRGGPGPPGPLMEQMGGRRGGGPGKMDKGEHRQERRDRPY   |
| Formulation:            | Liquid. Purified antibody supplied in 1x PBS buffer with 0.09% (w/v) sodium azide and 2% sucrose.<br><i>Note that this product is shipped as lyophilized powder to China customers.</i>  |
| Purification:           | Affinity Purified  |
| Conjugation:            | Unconjugated   |
| Storage:                | Store at -20°C as received.  |
| Stability:              | Stable for 12 months from date of receipt.   |
| Predicted Protein Size: | 68 kDa   |
| Gene Name:              | EWS RNA binding protein 1  |
| Database Link:          | <a href="#">NP_005234</a><br><a href="#">Entrez Gene 2130 Human</a><br><a href="#">Q01844</a>  |
| Background:             | EWSR1 is a putative RNA binding protein. Mutations in this gene, specifically a t(11;22) (q24;q12) translocation, are known to cause Ewing sarcoma as well as neuroectodermal and various other tumors. Alternative splicing of this gene results in two products. This gene encodes a putative RNA binding protein. Mutations in this gene, specifically a t(11;22) (q24;q12) translocation, are known to cause Ewing sarcoma as well as neuroectodermal and various other tumors. Alternative splicing of this gene results in two products. |



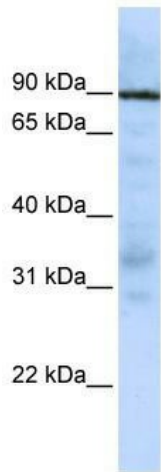
[View online »](#)

**Synonyms:** bK984G1.4; EWS; EWS-FLI1

**Note:** Immunogen Sequence Homology: Dog: 100%; Pig: 100%; Rat: 100%; Horse: 100%; Human: 100%; Mouse: 100%; Bovine: 100%; Rabbit: 100%; Guinea pig: 100%; Zebrafish: 77%

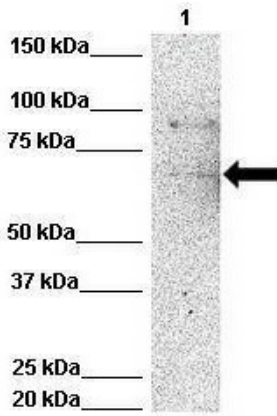
**Protein Families:** Druggable Genome, Stem cell - Pluripotency, Transcription Factors

**Product images:**



WB Suggested Anti-EWSR1 Antibody Titration: 0.2-1 ug/ml; ELISA Titer: 1: 312500; Positive Control: Jurkat cell lysate. EWSR1 is strongly supported by BioGPS gene expression data to be expressed in Jurkat

**EWSR1**



Lanes: Lane 1: 50ug Hela Lysate; Primary Antibody Dilution: 1: 1000; Secondary Antibody: Anti-rabbit-HRP; Secondary Antibody Dilution: 1: 10, 000; Gene Name: EWSR1; Submitted by: Archa Fox, University of Western Australia; EWSR1 is strongly supported by B