

Product datasheet for **TA343521**

ETS2 Rabbit Polyclonal Antibody

Product data:

Product Type:	Primary Antibodies
Applications:	WB
Recommended Dilution:	WB
Reactivity:	Human, Mouse
Host:	Rabbit
Isotype:	IgG
Clonality:	Polyclonal
Immunogen:	The immunogen for anti-ETS2 antibody: synthetic peptide directed towards the middle region of human ETS2. Synthetic peptide located within the following region: DPDEVARRWGKRKNKPKMNYEKLSRGLRYYYDKNIIHKTS GKRYVYRFVC
Formulation:	Liquid. Purified antibody supplied in 1x PBS buffer with 0.09% (w/v) sodium azide and 2% sucrose. <i>Note that this product is shipped as lyophilized powder to China customers.</i>
Purification:	Affinity Purified
Conjugation:	Unconjugated
Storage:	Store at -20°C as received.
Stability:	Stable for 12 months from date of receipt.
Predicted Protein Size:	53 kDa
Gene Name:	ETS proto-oncogene 2, transcription factor
Database Link:	NP_005230 Entrez Gene 23872 Mouse Entrez Gene 2114 Human P15036



[View online »](#)

Background:

ETS2 contains an ETS DNA-binding domain and belongs to the ETS family. ETS2 is a target of protein kinase C and upregulates GM-CSF. Ets2 and its targets play essential roles in endothelial cell function. Coexpression of Ets-2 and SRC-1 significantly associated with the rate of recurrence and HER expression in breast cancer. Overexpression of ETS2 is associated with human esophageal squamous cell carcinoma. ETS transcriptions factors, such as ETS2, regulate numerous genes and are involved in stem cell development, cell senescence and death, and tumorigenesis. The conserved ETS domain within these proteins is a winged helix-turn-helix DNA-binding domain that recognizes the core consensus DNA sequence GGAA/T of target genes (Dwyer et al., 2007 [PubMed 17986575]). [supplied by OMIM]. Publication Note: This RefSeq record includes a subset of the publications that are available for this gene. Please see the Entrez Gene record to access additional publications.

Synonyms:

ETS2IT1

Note:

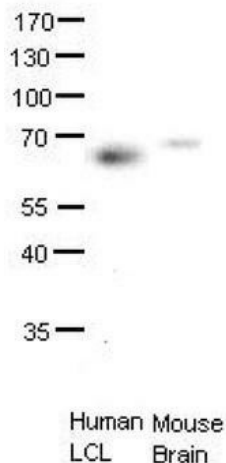
Immunogen Sequence Homology: Dog: 100%; Pig: 100%; Rat: 100%; Goat: 100%; Horse: 100%; Human: 100%; Mouse: 100%; Sheep: 100%; Bovine: 100%; Rabbit: 100%; Zebrafish: 100%; Guinea pig: 100%

Protein Families:

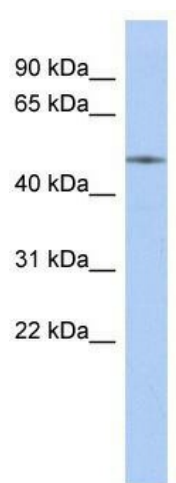
Druggable Genome, Transcription Factors

Protein Pathways:

Dorso-ventral axis formation

Product images:


ETS2 antibody - middle region validated by WB using human LCL and mouse brains at 1: 1000.



WB Suggested Anti-ETS2 Antibody Titration: 0.2-1 ug/ml; ELISA Titer: 1: 312500; Positive Control: Human kidney