

Product datasheet for **TA343517**

DLX5 Rabbit Polyclonal Antibody

Product data:

Product Type:	Primary Antibodies
Applications:	IHC, WB
Recommended Dilution:	WB, IHC
Reactivity:	Human
Host:	Rabbit
Isotype:	IgG
Clonality:	Polyclonal
Immunogen:	The immunogen for anti-DLX5 antibody: synthetic peptide directed towards the N terminal of human DLX5. Synthetic peptide located within the following region: MTGVFDRRVPISIRSGDFQAPFQTSAAAMHHPSQESPTLPESATDSDYYSP
Formulation:	Liquid. Purified antibody supplied in 1x PBS buffer with 0.09% (w/v) sodium azide and 2% sucrose. <i>Note that this product is shipped as lyophilized powder to China customers.</i>
Purification:	Protein A purified
Conjugation:	Unconjugated
Storage:	Store at -20°C as received.
Stability:	Stable for 12 months from date of receipt.
Predicted Protein Size:	31 kDa
Gene Name:	distal-less homeobox 5
Database Link:	NP_005212 Entrez Gene 1749 Human P56178



[View online »](#)

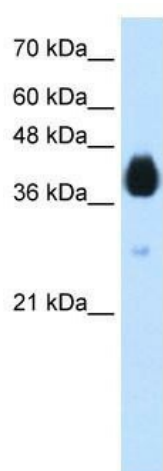
Background: DLX5 is a member of a homeobox transcription factor gene family similar to the Drosophila distal-less gene. This protein may play a role in bone development and fracture healing. Mutation in its gene, which is located in a tail-to-tail configuration with another member of the family on the long arm of chromosome 7, may be associated with split-hand/split-foot malformation. This gene encodes a member of a homeobox transcription factor gene family similar to the Drosophila distal-less gene. The encoded protein may play a role in bone development and fracture healing. Mutation in this gene, which is located in a tail-to-tail configuration with another member of the family on the long arm of chromosome 7, may be associated with split-hand/split-foot malformation.

Synonyms: SHFM1D

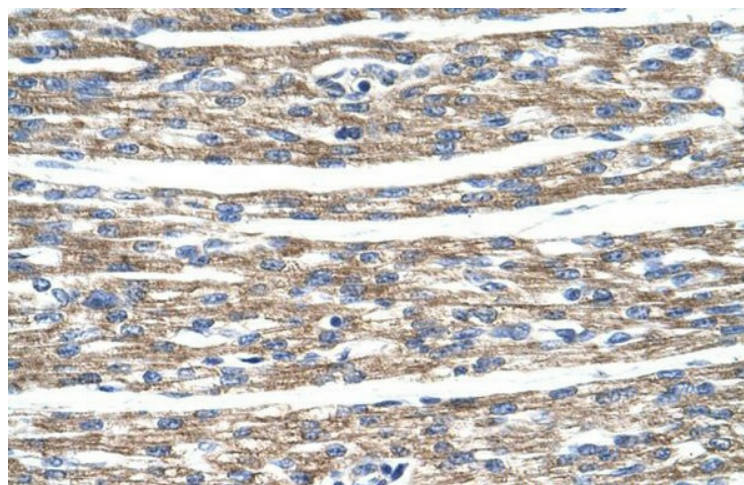
Note: Immunogen Sequence Homology: Dog: 100%; Pig: 100%; Rat: 100%; Horse: 100%; Human: 100%; Mouse: 100%; Bovine: 100%; Rabbit: 100%; Guinea pig: 93%

Protein Families: ES Cell Differentiation/IPS, Transcription Factors

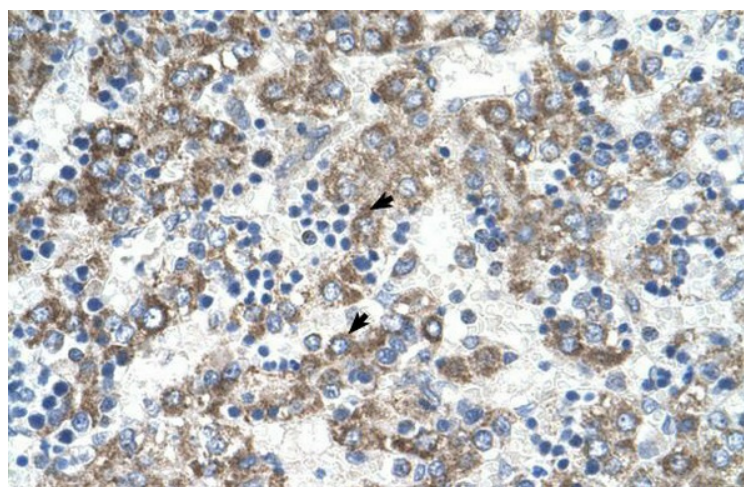
Product images:



WB Suggested Anti-DLX5 Antibody Titration: 1.25 ug/ml; ELISA Titer: 1: 1562500; Positive Control: Transfected 293T



Human Heart



Human Liver