

## Product datasheet for **TA343515**

### CEBPD Rabbit Polyclonal Antibody

#### Product data:

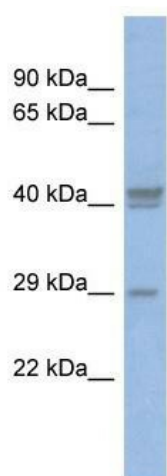
Product Type:	Primary Antibodies
Applications:	WB
Recommended Dilution:	WB
Reactivity:	Human
Host:	Rabbit
Isotype:	IgG
Clonality:	Polyclonal
Immunogen:	The immunogen for anti-CEBPD antibody: synthetic peptide directed towards the middle region of human CEBPD. Synthetic peptide located within the following region: RNQEMQQLVELSAENEKLHQRVEQLTRDLAGLRQFFKQLPSPFLPAAG
Formulation:	Liquid. Purified antibody supplied in 1x PBS buffer with 0.09% (w/v) sodium azide and 2% sucrose. <i>Note that this product is shipped as lyophilized powder to China customers.</i>
Purification:	Affinity Purified
Conjugation:	Unconjugated
Storage:	Store at -20°C as received.
Stability:	Stable for 12 months from date of receipt.
Predicted Protein Size:	28 kDa
Gene Name:	CCAAT/enhancer binding protein delta
Database Link:	<a href="#">NP_005186</a> <a href="#">Entrez Gene 1052 Human</a> <a href="#">P49716</a>
Background:	CEBPD is a bZIP transcription factor which can bind as a homodimer to certain DNA regulatory regions. It can also form heterodimers with the related protein CEBP-alpha. The encoded protein is important in the regulation of genes involved in immune and inf
Synonyms:	C; CELF; CRP3; EBP-delta; NF-IL6-beta
Note:	Immunogen Sequence Homology: Pig: 100%; Rat: 100%; Human: 100%; Mouse: 100%; Rabbit: 100%; Guinea pig: 100%; Sheep: 93%; Bovine: 93%



[View online »](#)

Protein Families: Druggable Genome, Transcription Factors

### Product images:



WB Suggested Anti-CEBPD Antibody Titration:  
0.2-1 ug/ml; ELISA Titer: 1: 312500; Positive  
Control: COLO205 cell lysate; CEBPD is supported  
by BioGPS gene expression data to be expressed  
in COLO205