

Product datasheet for **TA343514**

CBFA2T3 Rabbit Polyclonal Antibody

Product data:

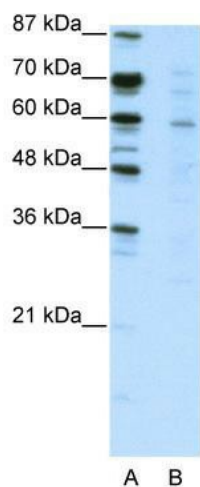
Product Type:	Primary Antibodies
Applications:	WB
Recommended Dilution:	WB
Reactivity:	Human
Host:	Rabbit
Isotype:	IgG
Clonality:	Polyclonal
Immunogen:	The immunogen for anti-CBFA2T3 antibody: synthetic peptide directed towards the N terminal of human CBFA2T3. Synthetic peptide located within the following region: MPASRLRDRAASSASGSTCGSMSQTHPVLESGLLASAGCSAPRGPRKGGP
Formulation:	Liquid. Purified antibody supplied in 1x PBS buffer with 0.09% (w/v) sodium azide and 2% sucrose. <i>Note that this product is shipped as lyophilized powder to China customers.</i>
Purification:	Protein A purified
Conjugation:	Unconjugated
Storage:	Store at -20°C as received.
Stability:	Stable for 12 months from date of receipt.
Predicted Protein Size:	60 kDa
Gene Name:	CBFA2/RUNX1 translocation partner 3
Database Link:	NP_005178 Entrez Gene 863 Human O75081
Background:	The t(16;21)(q24;q22) translocation is a rare but recurrent chromosomal abnormality associated with therapy-related myeloid malignancies. The translocation produces a chimeric gene made up of the 5'-region of the AML1 gene fused to the 3'-region of CBFA2T3. In addition, CBFA2T3 is a putative breast tumor suppressor.
Synonyms:	ETO2; MTG16; MTGR2; ZMYND4
Note:	Immunogen Sequence Homology: Human: 100%



[View online »](#)

Protein Families: Transcription Factors

Product images:



WB Suggested Anti-CBFA2T3 Antibody Titration: 2.5 ug/ml; ELISA Titer: 1: 312500; Positive Control: Jurkat cell lysate; CBFA2T3 is supported by BioGPS gene expression data to be expressed in Jurkat