

Product datasheet for **TA343513**

Atoh1 Rabbit Polyclonal Antibody

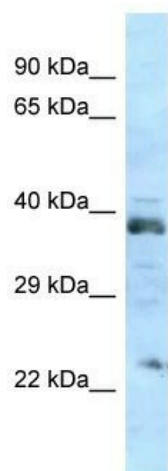
Product data:

Product Type:	Primary Antibodies
Applications:	WB
Recommended Dilution:	WB
Reactivity:	Rat
Host:	Rabbit
Isotype:	IgG
Clonality:	Polyclonal
Immunogen:	The immunogen for Anti-Atoh1 antibody is: synthetic peptide directed towards the N-terminal region of Rat Atoh1. Synthetic peptide located within the following region: EEWAEVKELGDHHRHPQPHHIPQLTPQPPATLQARDHPVYPAELSLLDST
Formulation:	Liquid. Purified antibody supplied in 1x PBS buffer with 0.09% (w/v) sodium azide and 2% sucrose. <i>Note that this product is shipped as lyophilized powder to China customers.</i>
Purification:	Affinity Purified
Conjugation:	Unconjugated
Storage:	Store at -20°C as received.
Stability:	Stable for 12 months from date of receipt.
Predicted Protein Size:	38 kDa
Gene Name:	atonal bHLH transcription factor 1
Database Link:	NP_001102708 Entrez Gene 500156 Rat
Background:	The function of this protein remains unknown.
Synonyms:	ATH1; bHLHa14; HATH1; MATH-1; Math1
Note:	Immunogen Sequence Homology: Human: 100%; Dog: 93%; Pig: 93%; Rat: 93%; Mouse: 93%; Bovine: 93%; Rabbit: 79%



[View online »](#)

Product images:



Host: Rabbit
Target Name: Atoh1
Sample Tissue: Rat Brain Lysate
Antibody Dilution: 1.0 μ g/ml

Host: Rabbit; Target Name: Atoh1; Sample Tissue:
Rat Brain lysates; Antibody Dilution: 1.0 ug/ml