

## Product datasheet for **TA343511**

### ATF1 Rabbit Polyclonal Antibody

#### Product data:

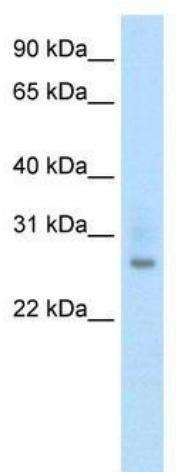
Product Type:	Primary Antibodies
Applications:	WB
Recommended Dilution:	WB
Reactivity:	Human
Host:	Rabbit
Isotype:	IgG
Clonality:	Polyclonal
Immunogen:	The immunogen for anti-ATF1 antibody: synthetic peptide directed towards the N terminal of human ATF1. Synthetic peptide located within the following region: ETAPQPGSAVQGAHISHIAQQVSSLSESEESQDSSDSIGSSQKAHGILAR
Formulation:	Liquid. Purified antibody supplied in 1x PBS buffer with 0.09% (w/v) sodium azide and 2% sucrose. <i>Note that this product is shipped as lyophilized powder to China customers.</i>
Purification:	Affinity Purified
Conjugation:	Unconjugated
Storage:	Store at -20°C as received.
Stability:	Stable for 12 months from date of receipt.
Predicted Protein Size:	29 kDa
Gene Name:	activating transcription factor 1
Database Link:	<a href="#">NP_005162</a> <a href="#">Entrez Gene 466 Human</a> <a href="#">P18846</a>
Background:	ATF1 binds the cAMP response element (CRE) (consensus: 5'-GTGACGT [AC] [AG]-3'), a sequence present in many viral and cellular promoters. ATF1 binds to the Tax-responsive element (TRE) of HTLV-I. ATF1 mediates PKA-induced stimulation of CRE-reporter genes.
Synonyms:	ATF-1; EWS-ATF1; FUS; TREB36
Note:	Immunogen Sequence Homology: Dog: 100%; Pig: 100%; Rat: 100%; Horse: 100%; Human: 100%; Mouse: 100%; Bovine: 100%; Rabbit: 100%; Guinea pig: 100%; Sheep: 85%



[View online »](#)

Protein Families: Druggable Genome, Transcription Factors

### Product images:



WB Suggested Anti-ATF1 Antibody Titration: 0.2-1 ug/ml; ELISA Titer: 1: 312500; Positive Control: Human Thymus