

Product datasheet for **TA343508**

NR1D2 Rabbit Polyclonal Antibody

Product data:

Product Type:	Primary Antibodies
Applications:	WB
Recommended Dilution:	WB
Reactivity:	Human
Host:	Rabbit
Isotype:	IgG
Clonality:	Polyclonal
Immunogen:	The immunogen for anti-NR1D2 antibody: synthetic peptide directed towards the C terminal of human NR1D2. Synthetic peptide located within the following region: ETLIRALRTLIMKNHPNEASIFTKLLKLPDLRSLNNMHSEELLAFKVHP
Formulation:	Liquid. Purified antibody supplied in 1x PBS buffer with 0.09% (w/v) sodium azide and 2% sucrose. <i>Note that this product is shipped as lyophilized powder to China customers.</i>
Purification:	Protein A purified
Conjugation:	Unconjugated
Storage:	Store at -20°C as received.
Stability:	Stable for 12 months from date of receipt.
Predicted Protein Size:	65 kDa
Gene Name:	nuclear receptor subfamily 1 group D member 2
Database Link:	NP_005117 Entrez Gene 9975 Human Q14995
Background:	NR1D2 can interact with NCOA5 coactivator, leading to a strong increase of transcription of target genes. NR1D2 also binds to the sequences 5'-AATGTAGGTCA-3' and 5'-ATAACTAGGTCA-3' and acts as a potent competitive transcriptional silencer and negative regulator of RORalpha mediated trans-activation. NR1D2 may play different roles in metabolism, inflammation, and circadian cycling in the organ-specific manner in homeostasis.
Synonyms:	BD73; EAR-1R; RVR

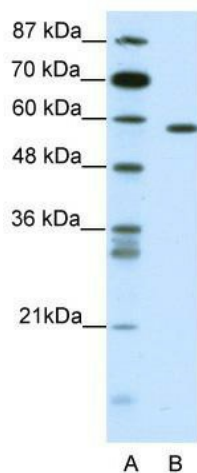


[View online »](#)

Note: Immunogen Sequence Homology: Dog: 100%; Pig: 100%; Rat: 100%; Horse: 100%; Human: 100%; Mouse: 100%; Bovine: 100%; Rabbit: 100%; Guinea pig: 100%; Zebrafish: 93%; Sheep: 92%

Protein Families: Druggable Genome, Nuclear Hormone Receptor, Transcription Factors

Product images:



WB Suggested Anti-NR1D2 Antibody Titration: 0.5 ug/ml; ELISA Titer: 1: 62500; Positive Control: Jurkat cell lysate