

## Product datasheet for **TA343506**

### THRAP3 Rabbit Polyclonal Antibody

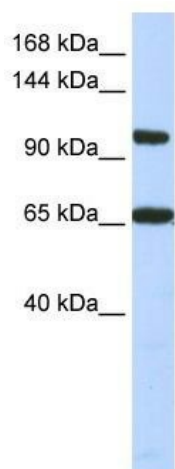
#### Product data:

Product Type:	Primary Antibodies
Applications:	WB
Recommended Dilution:	WB
Reactivity:	Human
Host:	Rabbit
Isotype:	IgG
Clonality:	Polyclonal
Immunogen:	The immunogen for anti-THRAP3 antibody: synthetic peptide directed towards the middle region of human THRAP3. Synthetic peptide located within the following region: GRGAFPRGRGRFMFRKSSTSPKWAHDKFSGEGEIEDDESGTENREEKDN
Formulation:	Liquid. Purified antibody supplied in 1x PBS buffer with 0.09% (w/v) sodium azide and 2% sucrose. <i>Note that this product is shipped as lyophilized powder to China customers.</i>
Purification:	Affinity Purified
Conjugation:	Unconjugated
Storage:	Store at -20°C as received.
Stability:	Stable for 12 months from date of receipt.
Predicted Protein Size:	109 kDa
Gene Name:	thyroid hormone receptor associated protein 3
Database Link:	<a href="#">NP_005110</a> <a href="#">Entrez Gene 9967 Human</a> <a href="#">Q9Y2W1</a>
Background:	THRAP3 plays a role in transcriptional coactivation.
Synonyms:	TRAP150
Note:	Immunogen Sequence Homology: Dog: 100%; Pig: 100%; Rat: 100%; Horse: 100%; Human: 100%; Mouse: 100%; Bovine: 100%; Rabbit: 100%; Guinea pig: 100%
Protein Families:	Druggable Genome, Transcription Factors



[View online »](#)

## Product images:



WB Suggested Anti-THRAP3 Antibody Titration:  
0.2-1 ug/ml; ELISA Titer: 1: 1562500; Positive  
Control: Human Muscle