

Product datasheet for **TA343503**

RACGAP1 Rabbit Polyclonal Antibody

Product data:

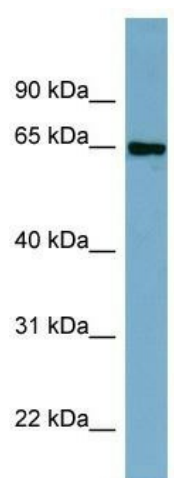
Product Type:	Primary Antibodies
Applications:	WB
Recommended Dilution:	WB
Reactivity:	Human
Host:	Rabbit
Isotype:	IgG
Clonality:	Polyclonal
Immunogen:	The immunogen for anti-CBFA2T2 antibody: synthetic peptide directed towards the middle region of human CBFA2T2. Synthetic peptide located within the following region: GQGRPLLVPVGRGSSARSADCSVPSPALDKTSATTSRSSTPASVTAIDTNG
Formulation:	Liquid. Purified antibody supplied in 1x PBS buffer with 0.09% (w/v) sodium azide and 2% sucrose. <i>Note that this product is shipped as lyophilized powder to China customers.</i>
Purification:	Affinity Purified
Conjugation:	Unconjugated
Storage:	Store at -20°C as received.
Stability:	Stable for 12 months from date of receipt.
Predicted Protein Size:	67 kDa
Gene Name:	Rac GTPase activating protein 1
Database Link:	NP_037409 Entrez Gene 29127 Human Q9H0H5
Background:	In acute myeloid leukemia, especially in the M2 subtype, the t(8;21)(q22;q22) translocation is one of the most frequent karyotypic abnormalities. The translocation produces a chimeric gene made up of the 5'-region of the RUNX1 (AML1) gene fused to the 3'-
Synonyms:	CYK4; HsCYK-4; ID-GAP; MgcRacGAP
Note:	Immunogen Sequence Homology: Dog: 100%; Pig: 100%; Rat: 100%; Horse: 100%; Human: 100%; Bovine: 100%; Guinea pig: 100%; Mouse: 93%; Rabbit: 93%



[View online »](#)

Protein Families: Druggable Genome

Product images:



WB Suggested Anti-CBFA2T2 Antibody Titration:
0.2-1 ug/ml; ELISA Titer: 1: 1562500; Positive
Control: Human Thymus