

## Product datasheet for **TA343501**

### JMJD7-PLA2G4B Rabbit Polyclonal Antibody

#### Product data:

Product Type:	Primary Antibodies
Applications:	WB
Recommended Dilution:	WB
Reactivity:	Human
Host:	Rabbit
Isotype:	IgG
Clonality:	Polyclonal
Immunogen:	The immunogen for anti-PLA2G4B antibody: synthetic peptide directed towards the N terminal of human PLA2G4B. Synthetic peptide located within the following region: AEAALAVRSELREFPAAARELCVPLAVPYLDKPPTPLHFYRDWVCPNRP
Formulation:	Liquid. Purified antibody supplied in 1x PBS buffer with 0.09% (w/v) sodium azide and 2% sucrose. <i>Note that this product is shipped as lyophilized powder to China customers.</i>
Purification:	Affinity Purified
Conjugation:	Unconjugated
Storage:	Store at -20°C as received.
Stability:	Stable for 12 months from date of receipt.
Predicted Protein Size:	114 kDa
Gene Name:	JMJD7-PLA2G4B readthrough
Database Link:	<a href="#">NP_005081</a> <a href="#">Entrez Gene 8681 Human</a> <a href="#">POC869</a>



[View online »](#)

**Background:**

PLA2G4B gene transcribes naturally-occurring mRNAs that are co-transcribed products of the neighboring JMJD7 and PLA2G4B genes. Incompletely processed read-through transcripts from these two loci are abundantly expressed in most tissues, but the function of the predicted protein product has not yet been determined. Alternative splicing of this gene results in different transcript variants, some of which are candidates for nonsense-mediated decay (NMD). The LOC100137047-PLA2G4B mRNAs are naturally occurring co-transcribed products of the neighboring LOC100137047 and PLA2G4B genes. Incompletely processed read-through transcripts from these two loci are abundantly expressed in most tissues, but the function of the predicted protein product has not yet been determined. Alternative splicing of this gene results in different transcript variants, some of which are candidates for nonsense-mediated decay (NMD).

**Synonyms:**

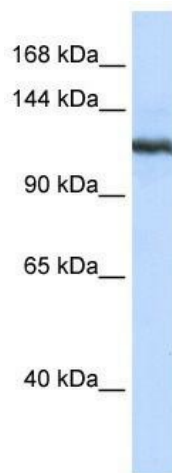
cPLA2-beta; HsT16992

**Note:**

Immunogen Sequence Homology: Human: 100%; Dog: 93%; Horse: 93%; Rat: 90%; Pig: 86%; Bovine: 86%; Rabbit: 86%; Guinea pig: 86%; Mouse: 79%

**Protein Pathways:**

alpha-Linolenic acid metabolism, Arachidonic acid metabolism, Ether lipid metabolism, Fc epsilon RI signaling pathway, Glycerophospholipid metabolism, GnRH signaling pathway, Linoleic acid metabolism, Long-term depression, MAPK signaling pathway, Metabolic pathways, Vascular smooth muscle contraction, VEGF signaling pathway

**Product images:**

WB Suggested Anti-PLA2G4B Antibody Titration:  
0.2-1 ug/ml; ELISA Titer: 1: 312500; Positive  
Control: 293T cell lysate