

## Product datasheet for **TA343500**

### ZNF142 Rabbit Polyclonal Antibody

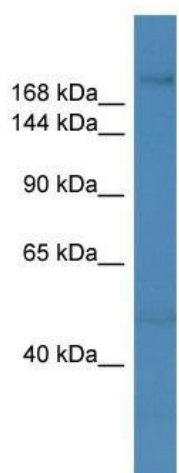
#### Product data:

Product Type:	Primary Antibodies
Applications:	IHC, WB
Recommended Dilution:	WB
Reactivity:	Human
Host:	Rabbit
Isotype:	IgG
Clonality:	Polyclonal
Immunogen:	The immunogen for anti-ZNF142 antibody: synthetic peptide directed towards the C terminal of human ZNF142. Synthetic peptide located within the following region: YKAKQKFQVVKHVRRHHPDQADPNQGVGKDPTTPTVHLHDVQLEDPSPPA
Formulation:	Liquid. Purified antibody supplied in 1x PBS buffer with 0.09% (w/v) sodium azide and 2% sucrose.
Purification:	Affinity Purified
Conjugation:	Unconjugated
Storage:	Store at -20°C as received.
Stability:	Stable for 12 months from date of receipt.
Predicted Protein Size:	171 kDa
Gene Name:	zinc finger protein 142
Database Link:	<a href="#">NP_005072</a> <a href="#">Entrez Gene 7701 Human</a> <a href="#">P52746</a>
Background:	The function of ZNF142 remains unknown.
Synonyms:	pHZ-49; zinc finger protein 142; zinc finger protein 142 (clone pHZ-49)
Note:	Immunogen Sequence Homology: Pig: 100%; Rat: 100%; Horse: 100%; Human: 100%; Mouse: 100%; Bovine: 100%; Rabbit: 100%; Guinea pig: 100%; Dog: 93%
Protein Families:	Transcription Factors

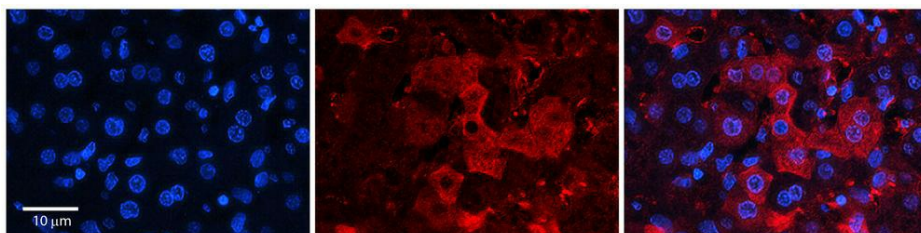


[View online »](#)

## Product images:



WB Suggested Anti-ZNF142 Antibody Titration: 0.2-1 ug/ml; ELISA Titer: 1: 1562500; Positive Control: MCF7 cell lysate; ZNF142 is strongly supported by BioGPS gene expression data to be expressed in Human MCF7 cells



Rabbit Anti-ZNF142 Antibody; Formalin Fixed Paraffin Embedded Tissue: Human Adult Liver; Observed Staining: Cytoplasm, Membrane in hepatocytes, strong signal, low tissue distribution; Primary Antibody Concentration: 1: 100; Secondary Antibody: Donkey anti