

Product datasheet for **TA343497**

NRF1 Rabbit Polyclonal Antibody

Product data:

Product Type:	Primary Antibodies
Applications:	IHC, WB
Recommended Dilution:	WB, IHC
Reactivity:	Human
Host:	Rabbit
Isotype:	IgG
Clonality:	Polyclonal
Immunogen:	The immunogen for anti-NRF1 antibody: synthetic peptide directed towards the C terminal of human NRF1. Synthetic peptide located within the following region: IVLSGETAAAVGALTGVQDANGLFMADRAGRKWILTDKATGLVQIPVSMY
Formulation:	Liquid. Purified antibody supplied in 1x PBS buffer with 0.09% (w/v) sodium azide and 2% sucrose. <i>Note that this product is shipped as lyophilized powder to China customers.</i>
Purification:	Protein A purified
Conjugation:	Unconjugated
Storage:	Store at -20°C as received.
Stability:	Stable for 12 months from date of receipt.
Predicted Protein Size:	56 kDa
Gene Name:	nuclear respiratory factor 1
Database Link:	NP_005002 Entrez Gene 4899 Human Q16656



[View online »](#)

Background:

NRF1 is a phosphorylated nuclear protein with a bZIP domain. This protein homodimerizes and functions as a transcription factor that activates the expression of some key metabolic genes regulating cellular growth and nuclear genes required for respiration, heme biosynthesis, and mitochondrial DNA transcription and replication. The protein has also been associated with the regulation of neurite outgrowth. This gene encodes a phosphorylated nuclear protein with a bZIP domain. This protein homodimerizes and functions as a transcription factor that activates the expression of some key metabolic genes regulating cellular growth and nuclear genes required for respiration, heme biosynthesis, and mitochondrial DNA transcription and replication. The protein has also been associated with the regulation of neurite outgrowth. Alternate transcriptional splice variants, which encode the same protein, have been characterized. Additional variants encoding different protein isoforms have been described but they have not been fully characterized.

Synonyms:

ALPHA-PAL

Note:

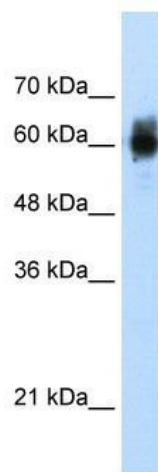
Immunogen Sequence Homology: Human: 100%; Rat: 91%

Protein Families:

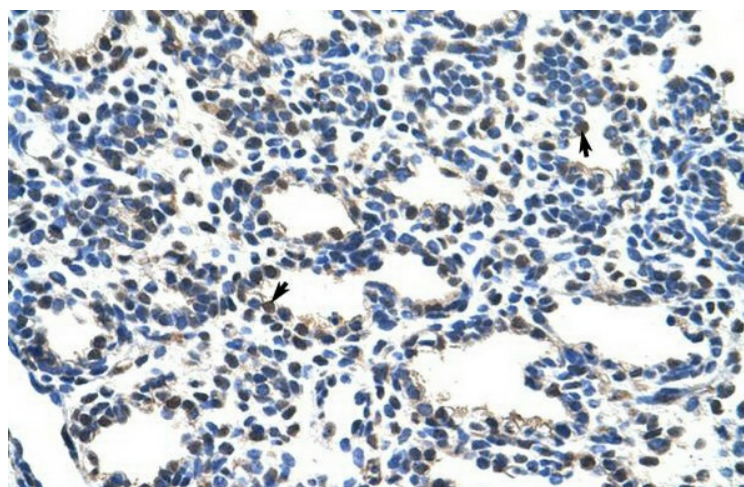
Transcription Factors

Protein Pathways:

Huntington's disease

Product images:

WB Suggested Anti-NRF1 Antibody Titration: 1.25 ug/ml; ELISA Titer: 1: 1562500; Positive Control: Transfected 293T



Human Lung