

## Product datasheet for **TA343496**

### **NRF1 Rabbit Polyclonal Antibody**

#### **Product data:**

Product Type:	Primary Antibodies
Applications:	WB
Recommended Dilution:	WB
Reactivity:	Human, Mouse
Host:	Rabbit
Isotype:	IgG
Clonality:	Polyclonal
Immunogen:	The immunogen for anti-NRF1 antibody: synthetic peptide directed towards the N terminal of human NRF1. Synthetic peptide located within the following region: MEEHGVTQTEHMATIEAHAVAQVQVHVATYTEHSMLSADEDSPPSPED
Formulation:	Liquid. Purified antibody supplied in 1x PBS buffer with 0.09% (w/v) sodium azide and 2% sucrose. <i>Note that this product is shipped as lyophilized powder to China customers.</i>
Purification:	Affinity Purified
Conjugation:	Unconjugated
Storage:	Store at -20°C as received.
Stability:	Stable for 12 months from date of receipt.
Predicted Protein Size:	53 kDa
Gene Name:	nuclear respiratory factor 1
Database Link:	<a href="#">NP_005002</a> <a href="#">Entrez Gene 18181 Mouse</a> <a href="#">Entrez Gene 4899 Human</a> <a href="#">Q16656</a>



[View online »](#)

**Background:**

NRF1 is a phosphorylated nuclear protein with a bZIP domain. This protein homodimerizes and functions as a transcription factor that activates the expression of some key metabolic genes regulating cellular growth and nuclear genes required for respiration, heme biosynthesis, and mitochondrial DNA transcription and replication. The protein has also been associated with the regulation of neurite outgrowth. This gene encodes a protein that homodimerizes and functions as a transcription factor which activates the expression of some key metabolic genes regulating cellular growth and nuclear genes required for respiration, heme biosynthesis, and mitochondrial DNA transcription and replication. The protein has also been associated with the regulation of neurite outgrowth. Alternate transcriptional splice variants, which encode the same protein, have been characterized. Additional variants encoding different protein isoforms have been described but they have not been fully characterized. Confusion has occurred in bibliographic databases due to the shared symbol of NRF1 for this gene and for 'nuclear factor (erythroid-derived 2)-like 1' which has an official symbol of NFE2L1.

**Synonyms:**

ALPHA-PAL

**Note:**

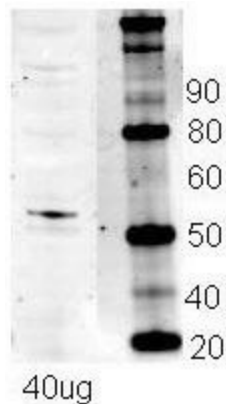
Immunogen Sequence Homology: Dog: 100%; Pig: 100%; Rat: 100%; Horse: 100%; Human: 100%; Mouse: 100%; Bovine: 100%; Rabbit: 100%; Guinea pig: 100%; Zebrafish: 93%

**Protein Families:**

Transcription Factors

**Protein Pathways:**

Huntington's disease

**Product images:**

NRF1 antibody - N-terminal region validated by WB using Mouse endothelial cells at 1: 500.

