

Product datasheet for **TA343493**

EVI1 (MECOM) Rabbit Polyclonal Antibody

Product data:

Product Type:	Primary Antibodies
Applications:	WB
Recommended Dilution:	WB
Reactivity:	Human
Host:	Rabbit
Isotype:	IgG
Clonality:	Polyclonal
Immunogen:	The immunogen for anti-MDS1 antibody: synthetic peptide directed towards the N terminal of human MDS1. Synthetic peptide located within the following region: MRSKGRARKLATNNECVYGNYPEIPLEEMPADGVASTPSLNIQEPSCSPA
Formulation:	Liquid. Purified antibody supplied in 1x PBS buffer with 0.09% (w/v) sodium azide and 2% sucrose. <i>Note that this product is shipped as lyophilized powder to China customers.</i>
Purification:	Protein A purified
Conjugation:	Unconjugated
Storage:	Store at -20°C as received.
Stability:	Stable for 12 months from date of receipt.
Predicted Protein Size:	19 kDa
Gene Name:	MDS1 and EVI1 complex locus
Database Link:	NP_004982 Entrez Gene 2122 Human Q03112



[View online »](#)

Background:

MDS1 is located at 3q26 170-400 kb upstream (telomeric) of EVI1 in the chromosomal region in which some of the breakpoints 5' of EVI1 have been mapped. MDS1 has been identified as a single gene as well as a previously unreported exon(s) of EVI1. MDS1 exists in normal tissues both as a unique transcript and as a normal fusion transcript with EVI1, with an additional 188 codons at the 5' end of the previously reported EVI1 open reading frame. In cells with translocation t(3;21), additional fusion transcripts are AML1-MDS1 and AML1-MDS1-EVI1. EVI1 and MDS1 are involved in leukemia associated with chromosomal translocation breakpoints in the region between these genes.

Synonyms:

AML1-EVI-1; EVI1; MDS1; MDS1-EVI1; PRDM3

Note:

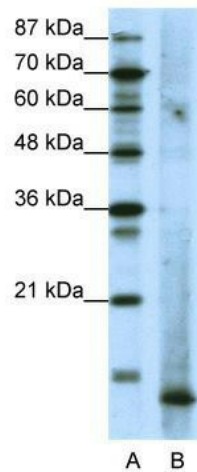
Immunogen Sequence Homology: Human: 100%; Mouse: 93%; Zebrafish: 77%

Protein Families:

Druggable Genome, Transcription Factors

Protein Pathways:

Chronic myeloid leukemia, MAPK signaling pathway, Pathways in cancer

Product images:

WB Suggested Anti-MDS1 Antibody Titration: 1.25 ug/ml; ELISA Titer: 1: 312500; Positive Control: Raji cell lysate