

Product datasheet for **TA343491**

ER81 (ETV1) Rabbit Polyclonal Antibody

Product data:

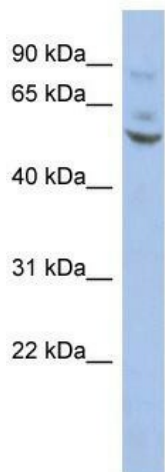
Product Type:	Primary Antibodies
Applications:	IHC, WB
Recommended Dilution:	WB, IHC
Reactivity:	Human
Host:	Rabbit
Isotype:	IgG
Clonality:	Polyclonal
Immunogen:	The immunogen for anti-ETV1 antibody: synthetic peptide directed towards the middle region of human ETV1. Synthetic peptide located within the following region: PDNQRPLLKTDMERHINEEDTVPLSHFDESMAYMPEGGCCNPHPYNEGYV
Formulation:	Liquid. Purified antibody supplied in 1x PBS buffer with 0.09% (w/v) sodium azide and 2% sucrose. <i>Note that this product is shipped as lyophilized powder to China customers.</i>
Purification:	Affinity Purified
Conjugation:	Unconjugated
Storage:	Store at -20°C as received.
Stability:	Stable for 12 months from date of receipt.
Predicted Protein Size:	55 kDa
Gene Name:	ETS variant 1
Database Link:	NP_004947 Entrez Gene 2115 Human P50549
Background:	ETV1 is a transcriptional activator that binds to DNA sequences containing the consensus pentanucleotide 5'-CGGA[AT]-3'.
Synonyms:	ER81
Note:	Immunogen Sequence Homology: Dog: 100%; Pig: 100%; Rat: 100%; Horse: 100%; Human: 100%; Mouse: 100%; Bovine: 100%; Guinea pig: 100%; Rabbit: 86%; Zebrafish: 86%



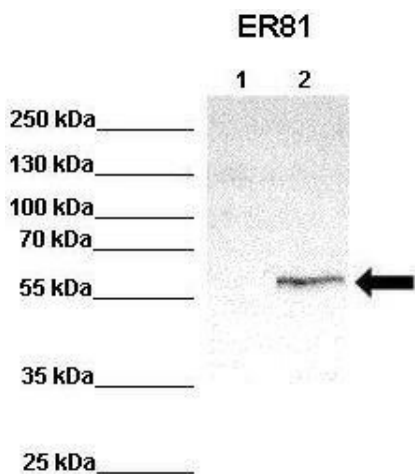
[View online »](#)

Protein Families: ES Cell Differentiation/IPS, Transcription Factors

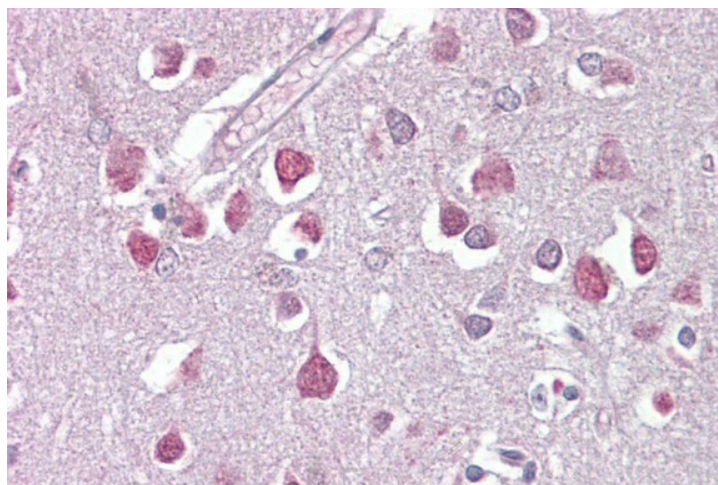
Product images:



WB Suggested Anti-ETV1 Antibody Titration: 0.2-1 ug/ml; ELISA Titer: 1: 1562500; Positive Control: HT1080 cell lysate



WB Suggested Anti-ETV1 Antibody; Positive Control: Lane 1: 100ug untransfected HEK293 lysate Lane 2: 33ug ER81 transfected HEK293 lysate; Primary Antibody Dilution: 1: 1000; Secondary Antibody: Anti-rabbit-HRP; Secondary Antibody Dilution: 1: 2000; Submitt



Immunohistochemistry with Brain, cortex tissue at an antibody concentration of 5 ug/ml using anti-ETV1 antibody