

Product datasheet for **TA343488**

CRSP7 (MED26) Rabbit Polyclonal Antibody

Product data:

Product Type:	Primary Antibodies
Applications:	WB
Recommended Dilution:	WB
Reactivity:	Human
Host:	Rabbit
Isotype:	IgG
Clonality:	Polyclonal
Immunogen:	The immunogen for anti-MED26 antibody: synthetic peptide directed towards the N terminal of human MED26. Synthetic peptide located within the following region: TAAPASPQQIRDRLQAIDPQSNIRNMVAVLEVISSLEKYPITKEALEET
Formulation:	Liquid. Purified antibody supplied in 1x PBS buffer with 0.09% (w/v) sodium azide and 2% sucrose.
Purification:	Affinity Purified
Conjugation:	Unconjugated
Storage:	Store at -20°C as received.
Stability:	Stable for 12 months from date of receipt.
Predicted Protein Size:	65 kDa
Gene Name:	mediator complex subunit 26
Database Link:	NP_004822 Entrez Gene 9441 Human O95402



[View online »](#)

Background:

MED26 is a subunit of the CRSP (cofactor required for SP1 activation) complex, which, along with TFIID, is required for efficient activation by SP1. This protein is also a component of other multisubunit complexes e.g. thyroid hormone receptor-(TR-) associated proteins which interact with TR and facilitate TR function on DNA templates in conjunction with initiation factors and cofactors. The activation of gene transcription is a multistep process that is triggered by factors that recognize transcriptional enhancer sites in DNA. These factors work with co-activators to direct transcriptional initiation by the RNA polymerase II apparatus. The protein encoded by this gene is a subunit of the CRSP (cofactor required for SP1 activation) complex, which, along with TFIID, is required for efficient activation by SP1. This protein is also a component of other multisubunit complexes e.g. thyroid hormone receptor-(TR-) associated proteins which interact with TR and facilitate TR function on DNA templates in conjunction with initiation factors and cofactors. PRIMARYREFSEQ_SPAN PRIMARY_IDENTIFIER PRIMARY_SPAN COMP 1-261 AC024075.4 20290-20550 c 262-726 AF104253.1 1-465 727-3184 AK128435.1 1414-3871

Synonyms:

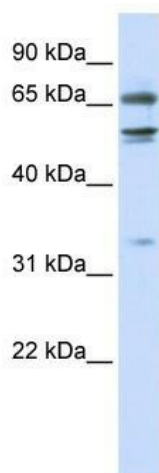
CRSP7; CRSP70

Note:

Immunogen Sequence Homology: Dog: 100%; Human: 100%; Rabbit: 100%; Rat: 93%; Mouse: 93%; Bovine: 93%

Protein Families:

Druggable Genome

Product images:


WB Suggested Anti-MED26 Antibody Titration:
0.2-1 ug/ml; ELISA Titer: 1: 312500; Positive
Control: 293T cell lysate