

Product datasheet for **TA343484**

TCEAL1 Rabbit Polyclonal Antibody

Product data:

| | |
|-------------------------|---|
| Product Type: | Primary Antibodies |
| Applications: | WB |
| Recommended Dilution: | WB |
| Reactivity: | Human |
| Host: | Rabbit |
| Isotype: | IgG |
| Clonality: | Polyclonal |
| Immunogen: | The immunogen for anti-TCEAL1 antibody: synthetic peptide directed towards the middle region of human TCEAL1. Synthetic peptide located within the following region: RPQFRGDIHGRNLSNEEMIQAADLEEMKRVRNKLMIMHWKAKRSRPYPI |
| Formulation: | Liquid. Purified antibody supplied in 1x PBS buffer with 0.09% (w/v) sodium azide and 2% sucrose. <i>Note that this product is shipped as lyophilized powder to China customers.</i> |
| Purification: | Affinity Purified |
| Conjugation: | Unconjugated |
| Storage: | Store at -20°C as received. |
| Stability: | Stable for 12 months from date of receipt. |
| Predicted Protein Size: | 19 kDa |
| Gene Name: | transcription elongation factor A like 1 |
| Database Link: | NP_004771 Entrez Gene 9338 Human Q15170 |



[View online »](#)

Background:

TCEAL1 is a member of the transcription elongation factor A (SII)-like (TCEAL) protein family. Members of this family may function as nuclear phosphoproteins that modulate transcription in a promoter context-dependent manner. TCEAL1 is similar to transcription elongation factor A/transcription factor SII and contains a zinc finger-like motif as well as a sequence related to the transcription factor SII Pol II-binding region. It may exert its effects via protein-protein interactions with other transcriptional regulators rather than via direct binding of DNA. This gene encodes a member of the transcription elongation factor A (SII)-like (TCEAL) gene family. Members of this family may function as nuclear phosphoproteins that modulate transcription in a promoter context-dependent manner. The encoded protein is similar to transcription elongation factor A/transcription factor SII and contains a zinc finger-like motif as well as a sequence related to the transcription factor SII Pol II-binding region. It may exert its effects via protein-protein interactions with other transcriptional regulators rather than via direct binding of DNA. Multiple family members are located on the X chromosome. Alternative splicing results in multiple transcript variants encoding a single isoform.

Synonyms:

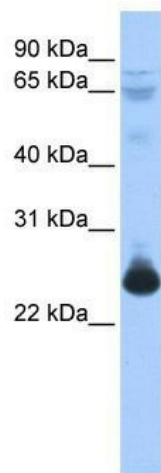
p21; pp21; SIIR; WEX9

Note:

Immunogen Sequence Homology: Pig: 100%; Rat: 100%; Human: 100%; Mouse: 100%; Rabbit: 93%; Dog: 85%; Horse: 85%; Bovine: 85%

Protein Families:

Transcription Factors

Product images:

WB Suggested Anti-TCEAL1 Antibody Titration:
0.2-1 ug/ml; ELISA Titer: 1: 312500; Positive
Control: Human Muscle