

## Product datasheet for **TA343482**

### LRRFIP1 Rabbit Polyclonal Antibody

#### Product data:

Product Type:	Primary Antibodies
Applications:	WB
Recommended Dilution:	WB
Reactivity:	Human
Host:	Rabbit
Isotype:	IgG
Clonality:	Polyclonal
Immunogen:	The immunogen for anti-LRRFIP1 antibody: synthetic peptide directed towards the N terminal of human LRRFIP1. Synthetic peptide located within the following region: AEAREIRMKELERQKKEEDSERYSRRSRRNTSASDEDERMSVGSRGSLRV
Formulation:	Liquid. Purified antibody supplied in 1x PBS buffer with 0.09% (w/v) sodium azide and 2% sucrose. <i>Note that this product is shipped as lyophilized powder to China customers.</i>
Purification:	Affinity Purified
Conjugation:	Unconjugated
Storage:	Store at -20°C as received.
Stability:	Stable for 12 months from date of receipt.
Predicted Protein Size:	86 kDa
Gene Name:	leucine rich repeat (in FLII) interacting protein 1
Database Link:	<a href="#">NP_004726</a> <a href="#">Entrez Gene 9208 Human</a> <a href="#">Q32MZ4</a>
Background:	LRRFIP1 is a transcriptional repressor which preferentially binds to the GC-rich consensus sequence (5'-AGCCCCCGGCG-3') and may regulate expression of TNF, EGFR and PDGFA. LRRFIP1 may control smooth muscle cells proliferation following artery injury through
Synonyms:	FLAP-1; FLAP1; FLIIAP1; GCF-2; GCF2; HUF1-1; TRIP

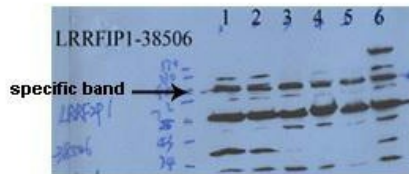


[View online »](#)

**Note:** Immunogen Sequence Homology: Dog: 100%; Pig: 100%; Rat: 100%; Horse: 100%; Human: 100%; Mouse: 100%; Bovine: 100%; Rabbit: 100%; Zebrafish: 100%; Guinea pig: 100%; Yeast: 90%

**Protein Families:** Transcription Factors

**Product images:**



Sample Type: Hepatitis C Virus & 293 Transfections  
Primary Dilution: 1 ug/mL

**Legend**

1. Huh7 5-TLR3 mock
2. Huh7 5-TLR3 HCV infection (MOI-0.1)
3. 293-TLR3 mock
4. 293-TLR3-LRRFIP1-iso2
5. 293-TLR3-LRRFIP1-iso2 deletion
6. 293-TLR3-LRRFIP1-iso5



WB Suggested Anti-LRRFIP1 Antibody Titration: 0.2-1 ug/ml; ELISA Titer: 1: 312500; Positive Control: NCI-H226 cell lysate