

Product datasheet for **TA343480**

TCF15 Rabbit Polyclonal Antibody

Product data:

Product Type:	Primary Antibodies
Applications:	WB
Recommended Dilution:	WB
Reactivity:	Human
Host:	Rabbit
Isotype:	IgG
Clonality:	Polyclonal
Immunogen:	The immunogen for anti-TCF15 antibody: synthetic peptide directed towards the N terminal of human TCF15. Synthetic peptide located within the following region: MAFALLRPVGAHVLYPDVRLLESEENRSESDASDQSFSGCCEGPEAARRG
Formulation:	Liquid. Purified antibody supplied in 1x PBS buffer with 0.09% (w/v) sodium azide and 2% sucrose. <i>Note that this product is shipped as lyophilized powder to China customers.</i>
Purification:	Affinity Purified
Conjugation:	Unconjugated
Storage:	Store at -20°C as received.
Stability:	Stable for 12 months from date of receipt.
Predicted Protein Size:	21 kDa
Gene Name:	transcription factor 15 (basic helix-loop-helix)
Database Link:	NP_004600 Entrez Gene 6939 Human Q12870

Background: TCF15 is found in the nucleus and may be involved in the early transcriptional regulation of patterning of the mesoderm. The basic helix-loop-helix protein requires dimerization with another basic helix-loop-helix protein for efficient DNA binding. The protein encoded by this gene is found in the nucleus and may be involved in the early transcriptional regulation of patterning of the mesoderm. The encoded basic helix-loop-helix protein requires dimerization with another basic helix-loop-helix protein for efficient DNA binding.



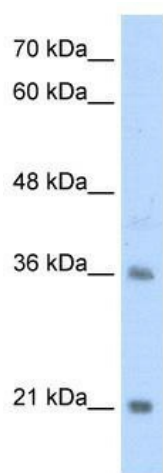
[View online »](#)

Synonyms: bHLHa40; EC2; PARAXIS

Note: Immunogen Sequence Homology: Dog: 100%; Pig: 100%; Rat: 100%; Horse: 100%; Human: 100%; Mouse: 100%; Bovine: 100%; Rabbit: 100%; Guinea pig: 100%; Zebrafish: 77%

Protein Families: Druggable Genome, Transcription Factors

Product images:



WB Suggested Anti-TCF15 Antibody Titration: 2.5 ug/ml; Positive Control: Jurkat cell lysate